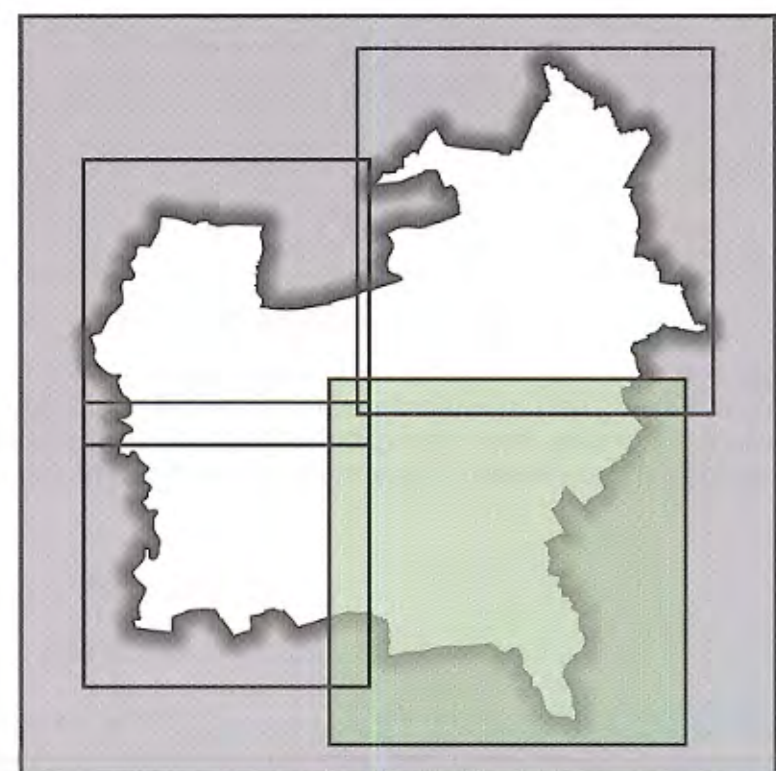


**South Eastern Area Sheet**  
 backed with North Eastern Area Sheet

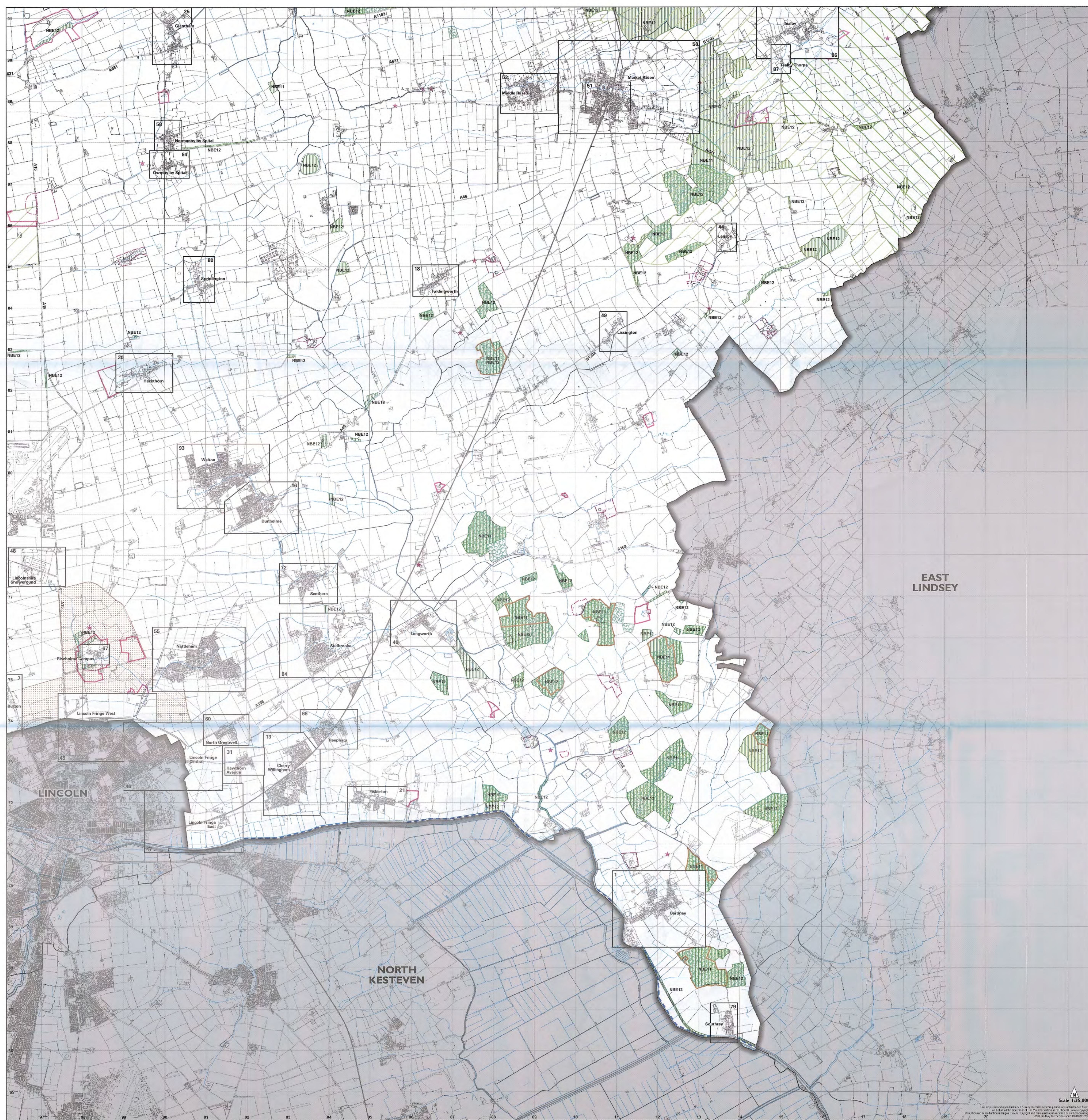


Map Scale 1:35,000

**KEY TO MAP**

- Residential Allocation (Policy STRAT 2)
- Land with Planning Permission for Housing as at 1/1/03 (Policy STRAT 11)
- Employment Allocation (Policy STRAT 15)
- Mixed Use Allocation (Policy STRAT 14) & Longer Term Development Option (Policy STRAT 10)
- Recreational Area Allocation (Policy STRAT 17)
- Retail Allocation (Policy STRAT 16)
- Town Centre Boundary (Policy RTC 1)
- Village Centre Boundary (Policy RTC 3)
- Trinity Street Area Boundary (Policy RTC 2)
- Settlement Boundary (Policy STRAT 4/5/6)
- Undeveloped Brecks between Settlements and Green Wedges around Lincoln (Policy STRAT 13)
- Important Open Spaces in Settlements (Policy CORE 9)
- Important Frontages in Settlements (Policy CORE 9)
- Landscaping (Policy CORE 10)
- Conservation Area (Policy NBE 1)
- Area of Outstanding Natural Beauty (Policy NBE 9)
- Area of Great Landscape Value (Policy NBE 10)
- National Nature Reserve (Policy NBE 11)
- S.S.S.I. & S.N.C.I. (Policy NBE 11/12)
- Area of Ancient Woodland (Policy NBE 12)
- Regionally Important Geological/Geomorphological Sites (Policy NBE 12)
- Scheduled Ancient Monuments (Policy NBE 7)
- Historic Parks and Gardens (Policy NBE 8)
- Lincoln Eastern By-Pass (Policy ECON 13)
- Waterway Corridor (Policy CRT 20)
- Lincolnshire Showground and Market Rasen Racecourse (Policy CRT 7)
- Riseholme Campus (University of Lincoln) (Policy CRT 6)
- Inset Map Frames
- Plan Area Boundary
- Area Outside District

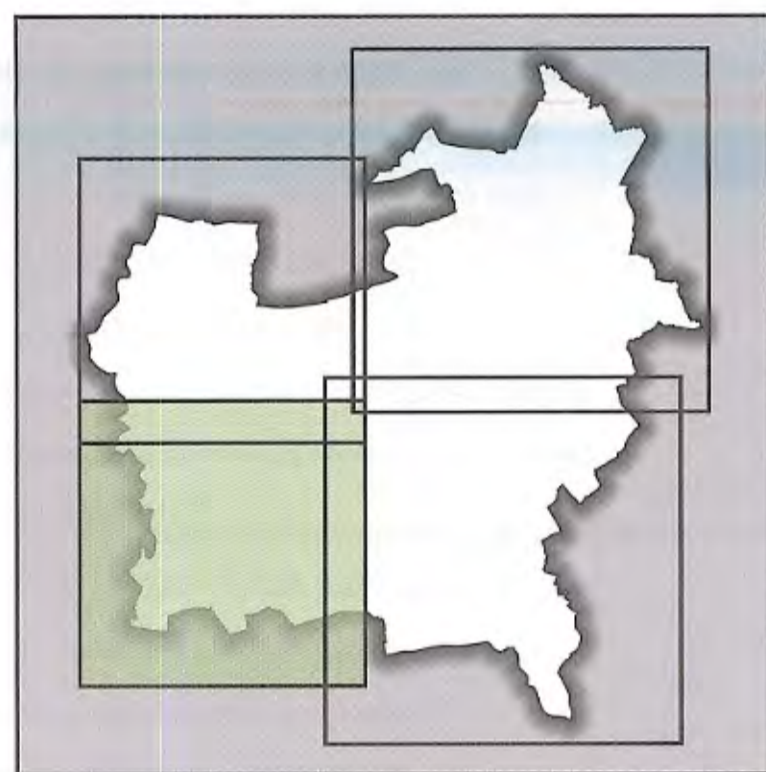
This map is based upon Ordnance Survey material with the permission of Ordnance Survey on behalf of the Controller of Her Majesty's Stationery Office © Crown copyright. Unauthorised reproduction infringes Crown copyright and may lead to prosecution or civil proceedings. West Lindsey District Council 1000018701 2004.  
 Maps produced by Lovell Johns Ltd, Oxford, England.





**West Lindsey Local Plan  
First Review  
June 2006**

**South Western Area Sheet  
backed with North Western Area Sheet**



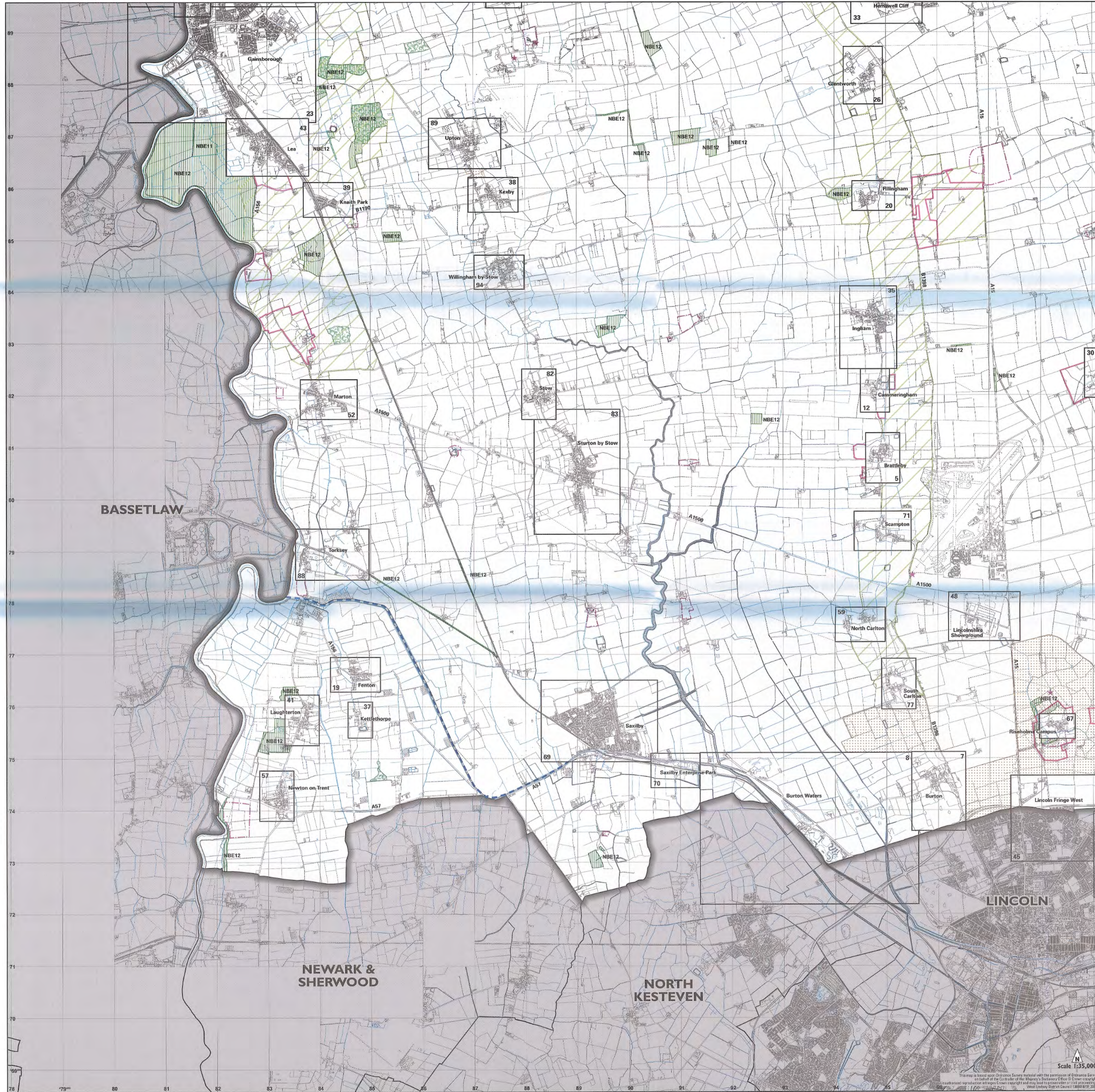
Map Scale 1:35,000

**KEY TO MAP**

- Residential Allocation (Policy STRAT 2)
- Land with Planning Permission for Housing as at 1/1/03 (Policy STRAT 11)
- Employment Allocation (Policy STRAT 15)
- Mixed Use Allocation (Policy STRAT 14) & Longer Term Development Option (Policy STRAT 10)
- Recreational Area Allocation (Policy STRAT 17)
- Retail Allocation (Policy STRAT 16)
- Town Centre Boundary (Policy RTC 1)
- Village Centre Boundary (Policy RTC 3)
- Trinity Street Area Boundary (Policy RTC 2)
- Settlement Boundary (Policy STRAT 4/5/6)
- Undeveloped Breaks between Settlements and Green Wedges around Lincoln (Policy STRAT 13)
- Important Open Spaces in Settlements (Policy CORE 9)
- Important Frontages in Settlements (Policy CORE 9)
- Landscaping (Policy CORE 10)
- Conservation Area (Policy NBE 1)
- Area of Outstanding Natural Beauty (Policy NBE 9)
- Area of Great Landscape Value (Policy NBE 10)
- National Nature Reserve (Policy NBE 11)
- S.S.S.I. & S.N.C.I. (Policy NBE 11/12)
- Area of Ancient Woodland (Policy NBE 12)
- Regionally Important Geological/Geomorphological Sites (Policy NBE 12)
- Scheduled Ancient Monuments (Policy NBE 7)
- Historic Parks and Gardens (Policy NBE 8)
- Lincoln Eastern By-Pass (Policy ECON 13)
- Waterway Corridor (Policy CRT 20)
- Lincolnshire Showground and Market Rasen Racecourse (Policy CRT 7)
- Riseholme Campus (University of Lincoln) (Policy CRT 6)
- Inset Map Frames
- Plan Area Boundary
- Area Outside District

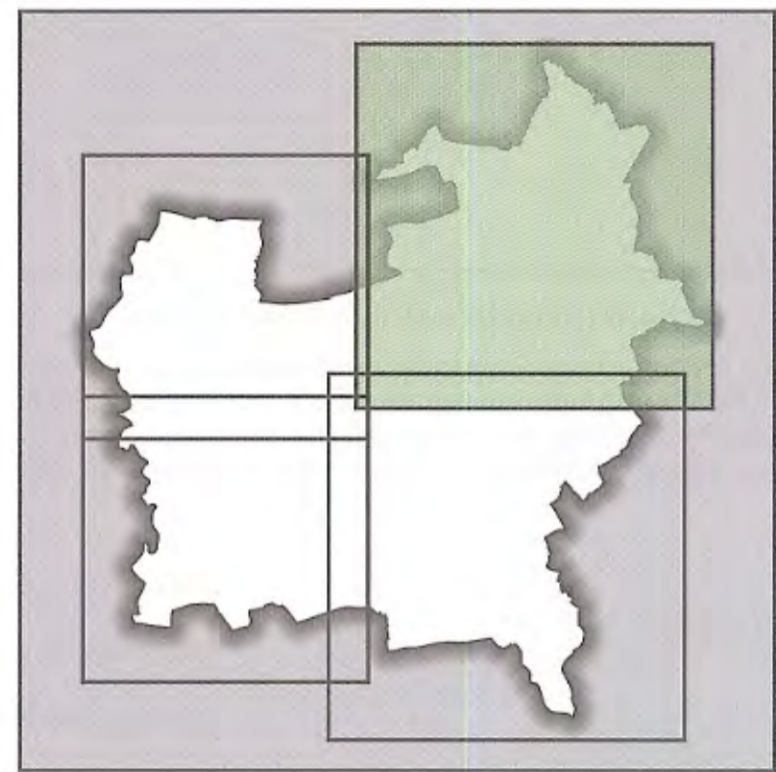
This map is based upon Ordnance Survey material with the permission of Ordnance Survey on behalf of the Controller of Her Majesty's Stationery Office © Crown copyright. Unauthorised reproduction infringes Crown copyright and may lead to prosecution or civil proceedings. West Lindsey District Council 1000018701 2004.

Maps produced by Lovell Johns Ltd., Oxford, England.



Scale 1:35,000

This map is based upon Ordnance Survey material with the permission of Ordnance Survey on behalf of the Controller of Her Majesty's Stationery Office © Crown copyright. Unauthorised reproduction infringes Crown copyright and may lead to prosecution or civil proceedings. West Lindsey District Council 1000018701 2004.

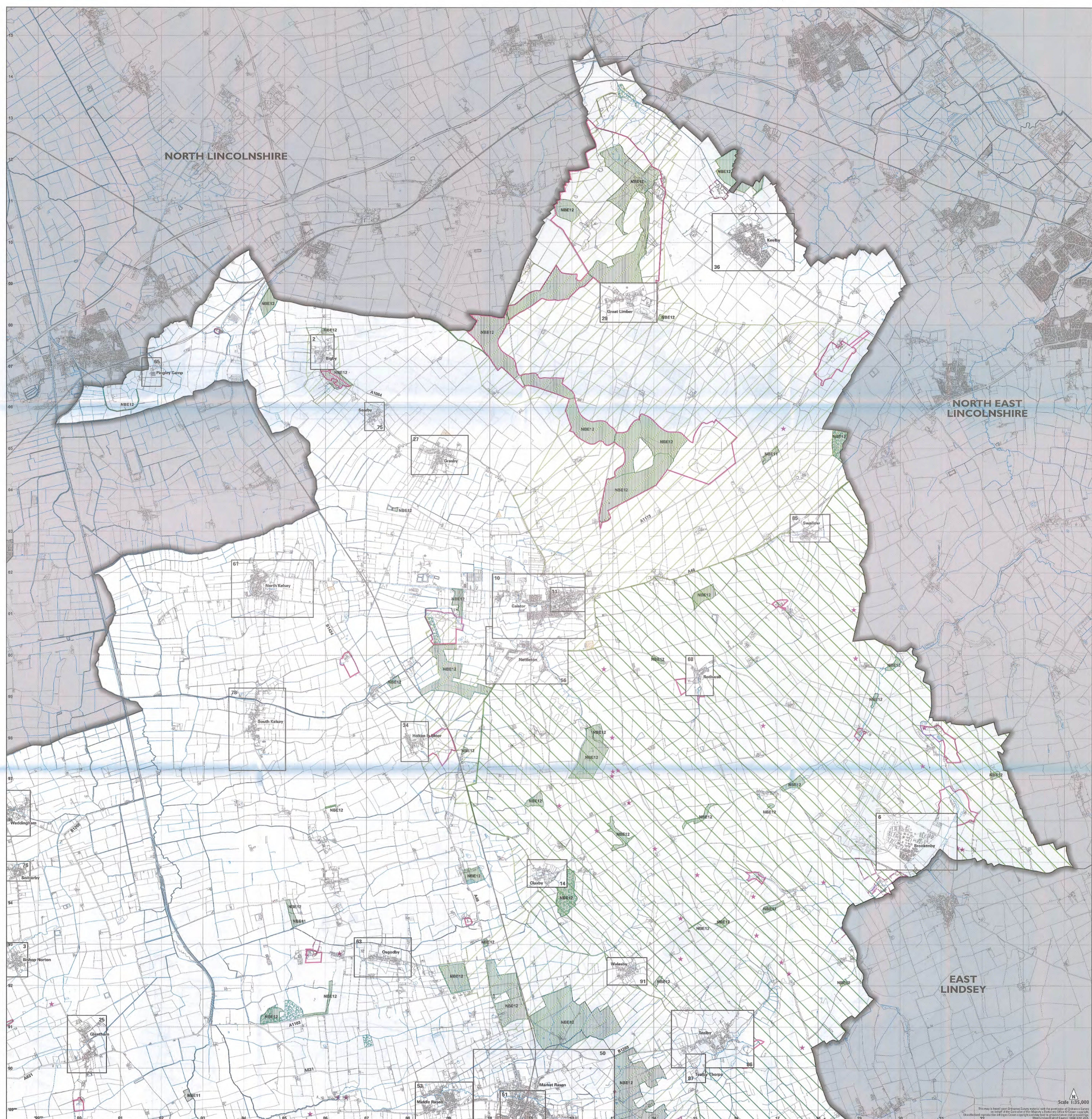


Map Scale 1:35,000

**KEY TO MAP**

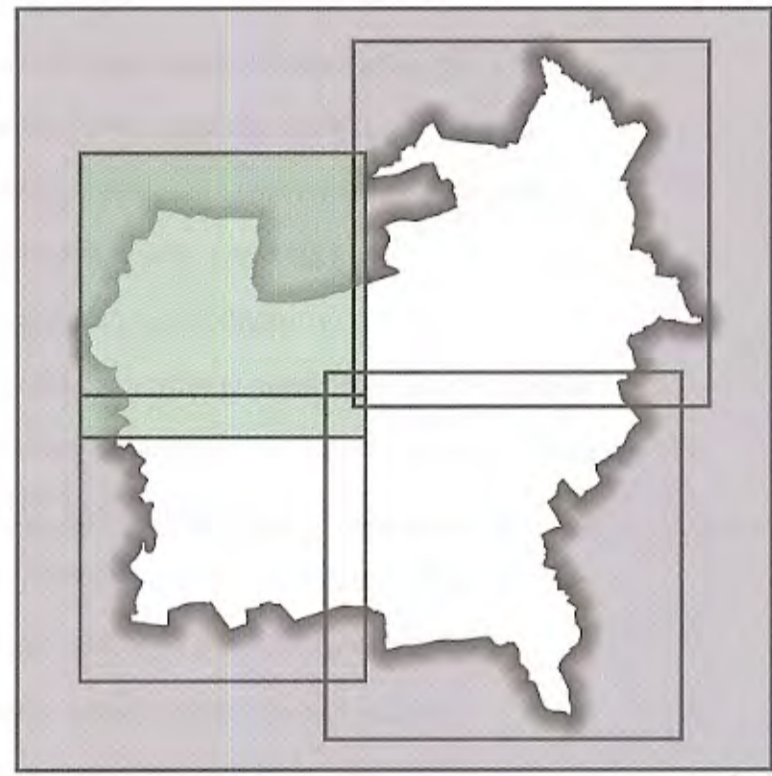
- Residential Allocation (Policy STRAT 2)
- Land with Planning Permission for Housing as at 1/1/03 (Policy STRAT 11)
- Employment Allocation (Policy STRAT 15)
- Mixed Use Allocation (Policy STRAT 14) & Longer Term Development Option (Policy STRAT 10)
- Recreational Area Allocation (Policy STRAT 17)
- Retail Allocation (Policy STRAT 16)
- Town Centre Boundary (Policy RTC 1)
- Village Centre Boundary (Policy RTC 3)
- Trinity Street Area Boundary (Policy RTC 2)
- Settlement Boundary (Policy STRAT 4/5/6)
- Undeveloped Breaks between Settlements and Green Wedges around Lincoln (Policy STRAT 13)
- Important Open Spaces in Settlements (Policy CORE 9)
- Important Frontages in Settlements (Policy CORE 9)
- Landscaping (Policy CORE 10)
- Conservation Area (Policy NBE 1)
- Area of Outstanding Natural Beauty (Policy NBE 9)
- Area of Great Landscape Value (Policy NBE 10)
- National Nature Reserve (Policy NBE 11)
- S.S.S.I. & S.N.C.I. (Policy NBE 11/12)
- Area of Ancient Woodland (Policy NBE 12)
- Regionally Important Geological/Geomorphological Sites (Policy NBE 12)
- Scheduled Ancient Monuments (Policy NBE 7)
- Historic Parks and Gardens (Policy NBE 8)
- Lincoln Eastern By-Pass (Policy ECON 13)
- Waterway Corridor (Policy CRT 20)
- Lincolnshire Showground and Market Rasen Racecourse (Policy CRT 7)
- Riseholme Campus (University of Lincoln) (Policy CRT 6)
- Inset Map Frames
- Plan Area Boundary
- Area Outside District

This map is based upon Ordnance Survey material with the permission of Ordnance Survey on behalf of the Controller of Her Majesty's Stationery Office © Crown copyright. Unauthorised reproduction infringes Crown copyright and may lead to prosecution or civil proceedings. West Lindsey District Council 1000018701 2004.  
Maps produced by Lovell Johns Ltd., Oxford, England.



**West Lindsey Local Plan**  
**First Review**  
June 2006

**North Western Area Sheet**  
backed with South Western Area Sheet



Map Scale 1:35,000

**KEY TO MAP**

- Residential Allocation (Policy STRAT 2)
- Land with Planning Permission for Housing as at 1/1/03 (Policy STRAT 11)
- Employment Allocation (Policy STRAT 15)
- Mixed Use Allocation (Policy STRAT 14) & Longer Term Development Option (Policy STRAT 10)
- Recreational Area Allocation (Policy STRAT 17)
- Retail Allocation (Policy STRAT 16)
- Town Centre Boundary (Policy RTC 1)
- Village Centre Boundary (Policy RTC 3)
- Trinity Street Area Boundary (Policy RTC 2)
- Settlement Boundary (Policy STRAT 4/5/6)
- Undeveloped Breaks between Settlements and Green Wedges around Lincoln (Policy STRAT 13)
- Important Open Spaces in Settlements (Policy CORE 9)
- Important Frontages in Settlements (Policy CORE 9)
- Landscaping (Policy CORE 10)
- Conservation Area (Policy NBE 1)
- Area of Outstanding Natural Beauty (Policy NBE 9)
- Area of Great Landscape Value (Policy NBE 10)
- National Nature Reserve (Policy NBE 11)
- S.S.S.I. & S.N.C.I. (Policy NBE 11/12)
- Area of Ancient Woodland (Policy NBE 12)
- Regionally Important Geological/Geomorphological Sites (Policy NBE 12)
- Scheduled Ancient Monuments (Policy NBE 7)
- Historic Parks and Gardens (Policy NBE 8)
- Lincoln Eastern By-Pass (Policy ECON 13)
- Waterway Corridor (Policy CRT 20)
- Lincolnshire Showground and Market Rasen Racecourse (Policy CRT 7)
- Riseholme Campus (University of Lincoln) (Policy CRT 6)
- Inset Map Frames
- Plan Area Boundary
- Area Outside District

This map is based upon Ordnance Survey material with the permission of Ordnance Survey on behalf of the Controller of Her Majesty's Stationery Office © Crown copyright. Unauthorised reproduction infringes Crown copyright and may lead to prosecution or civil proceedings. West Lindsey District Council 1000018701 2004.

Maps produced by Lovell Johns Ltd., Oxford, England.

