



CENTRAL LINCOLNSHIRE LOCAL PLAN

**SCHEDULE OF POST-SUBMISSION POLICIES MAP
MODIFICATIONS**

Version for Public Consultation 23 January – 6 March 2017 (six weeks)

**Details on the procedure for making representations on this Schedule can be found
overleaf**

Statement of Representations Procedure in respect of the making representations on the Schedule of Proposed Policies Map Modification

All representations on this Schedule must be made, and received, within the dates set out on the front cover of this document. Any EARLY or LATE representations will not be considered.

Representations must be made in writing (which includes email) to:

Email: talkplanning@central-lincs.org.uk

Address: Central Lincolnshire Local Plan Team, North Kesteven District Council, Kesteven Street, Sleaford NG34 7EF

For queries, please contact the Programme Officer on Telephone: 07973 916952

Note: verbal representations, or representations left by telephone answerphone or similar, will not be accepted.

Important Note: Representations should only be made on the modifications as set out in this schedule. This is not a consultation on the full Local Plan or the wider Policies Map, nor should representors re-submit representations made at the Proposed Submission stage.

CENTRAL LINCOLNSHIRE LOCAL PLAN

SCHEDULE OF POST-SUBMISSION SUGGESTED POLICIES MAP MODIFICATIONS

Introduction

Whilst often seen as part of the same document, the Local Plan and the Policies Map are two separate matters. In simple terms, the Policies Map illustrates geographically the Policies in the Development Plan (Note: a Local Plan forms part of the Development Plan).

Nevertheless, it is a requirement for CLJSPC to submit a “submission Policies Map”, which is a map which accompanies a Submitted Local Plan and which shows how the adopted Policies Map would be amended by the accompanying Local Plan, if it were adopted.

As such, because the Policies Map is not part of the Local Plan, the Inspector cannot recommend main modifications to it. However, it is appropriate and necessary for the Inspector to consider the policies of the Plan in the light of what the CLJSPC proposes will be illustrated on the Policies Map, and hence why it is a legislative requirement to submit a ‘submission Policies Map’. If the geographical illustrations on a Policies Map is inappropriate it could mean the relevant policy is not effective or justified which would be likely to affect soundness. Consequently, it is the case that the geographic representation of the policies is before the Inspector.

As such, and as a result of a Modification, a consequential modification to the Policies Map might be necessary, and something which the Inspector will recommend in order for the plan to be sound.

For example, if a modification deletes an allocation from the submission Local Plan, it would be reasonable under the main modification text which deleted the site from a policy in the Plan to include additional text to make it clear that there is an implication for the Policies Map. Wording such as the following would apply: ‘Accordingly, the geographical illustration of the proposed allocation as shown on the submission Policies Map will not be shown on the adopted Policies Map’

Likewise, but in the opposite direction, if a main modification added an allocation, similar explanatory wording could be used, such as the following: ‘the proposed geographical illustration of the additional allocation is shown in [add reference] and this will be shown on the adopted Policies Map when the plan is adopted.’

Separately, there could be instances where it is appropriate for the Policies Map to change, but this is not a consequence of a main modification. This might, for example, be where there is no change to a policy (e.g. a green wedge) but the Inspector concludes that the proposed geographical illustration on the submission Policies Map is inappropriate, for example because the boundary is in the wrong place for some reason and should be re-drawn (and so the policy would not be effective or justified). In such cases it is legitimate for the Inspector to state in their Report that, unless the geographic representation of the policy is shown differently from the submission Policies Map, the Plan will not be sound. However, before that point is reached the suggested map change would need to be consulted upon and the Inspector would need to consider any

comments made. As such, those suggested map changes are being made available for consultation alongside the Main Modifications, albeit they are not listed as 'main modifications' as such.

For a full list of suggested Main Modifications please see the separate document on the website which is being consulted upon at the same time as this schedule of suggested Policies Map modifications.

Any representations received on this schedule of suggested Policies Map Modifications will be carefully considered by the Inspectors prior to the Inspector's report being finalised, and prior to the Policies Map being formally updated (alongside adoption of the Local Plan).

Ref	Policies Map	Change proposed	Comments
MapMod/1	Inset Map 1	Remove Important Open Space designation from allocated sites CL4652 and CL4704. See Appendix 1	Correct a drafting error on the Policies Map (Inset 1)
MapMod/2	Inset Map 1	The boundary of site CL529 needs to be amended on Inset Map 1 to remove the area to the south of Skellingthorpe Road. See Appendix 1	The boundary of site CL529 needs to be amended on Inset Map 1 to remove the area to the south of Skellingthorpe Road. This area should not have been included within the allocation area as it is not within the area with planning permission.
MapMod/3	Inset Map 1	Amend (reduce) Site CL4615, and re-name as site CL4430 See Appendix 1	To reflect what, based on the latest information, is likely to occur on the site and to take account of other uses being proposed for part of the site.
MapMod/4	Inset Map 1	Add site CL540 See Appendix 1	This site has extant permission with 51 dwellings remaining to be built
MapMod/5	Inset Map 1	Do not include site CL452 on the Policies Map See Appendix 1	This site has now completed.
MapMod/6	Inset Map 1	Do not include site CL516 on the Policies Map	This site has now completed.

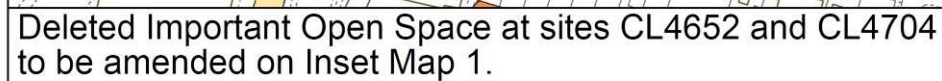
		See Appendix 1	
MapMod/7	Inset Map 1	Do not include site CL920 on the Policies Map See Appendix 1	This site has now completed.
MapMod/8	Inset Map 1	Amend the boundary for the Green Wedge at Hykeham Pits, North Hykeham. See Appendix 1	The site to be removed has been previously used for landfill, is inaccessible to the public, and does not meet the Green Wedge criteria. As such, it should be removed from the Green Wedge.
MapMod/9	Inset Map 1	Amend the boundary for the Important Open Space at Wolsey Way, Lincoln See Appendix 1	This area of Important Open Space encompasses the King George's playing fields and a narrow parcel of land between properties on Larkspur Road and Hurstwood Close/Westholm Close. However, the narrow parcel of land is clearly separated from the playing fields by a fence and a row of trees. It is also largely overgrown and whilst there are informal routes across the site, the land is within private ownership with no formal access. The boundary of the Important Open Space should therefore be amended to remove the parcel of land north-east of the playing fields.
MapMod/10	Inset Map 2	Add site CL4735 See Appendix 1	This site has now gained permission for 101 dwellings.
MapMod/11	Inset Map 3	Extend site CL4691 See Appendix 1	Neighbouring site also with permission has been added to site area and capacity.
MapMod/12	Inset Map 3	Do not include site CL1735 on the Policies Map See Appendix 1	Site size is below the thresholds, and therefore should not have been included on the Submission Policies Map
MapMod/13	Inset Map 3	Do not include site CL1637 on the Policies Map	Site size is below the thresholds, and therefore should

		See Appendix 1	not have been included on the Submission Policies Map
MapMod/14	Inset Map 3	Do not include site CL1624 on the Policies Map See Appendix 1	This site has now completed.
MapMod/15	Inset Map 3	Amend the boundary for the Important Open Space to the west of Horsley Road / Greystones Rd, Gainsborough. See Appendix 1	This designation encompasses two different areas of land. The majority contains pitches associated with the Roses Sports Ground whereas the northernmost part of the site is separated by dense landscaping. This is illustrated in the Central Lincolnshire Open Space Audit and Provision Assessment (April 2016) referred to by representations on behalf of the Thonock and Somerby Estate. The area to the north is not part of the sports pitches, is not integral to any wider green infrastructure network and in its current condition does not contribute positively to its surroundings. As an area of overgrown grassland on the edge of a housing estate the plan should be amended in this location to remove this part of the site from the Important Open Space designation.
MapMod/16	Inset Map 4	Amend conservation area boundary on Inset Map 4 to reflect the amended boundary as adopted in the Sleaford Conservation Area Appraisal (April 2016).	Factual updates
MapMod/17	Inset Map 5	Add site CL4007 See Appendix 1	Site added as this now has permission for 170 dwellings
MapMod/18	Inset Map 6	Do not include site CL2089 on the Policies Map See Appendix 1	Sites with permission are no longer being included as allocations in this policy, as it is contrary to the overall site allocations methodology.
MapMod/19	Inset Map 12	Add sites CL4751 and CL4752 and extend inset to show area south of Hawthorn Road	Both sites now have permission for 33 and 26 dwellings respectively

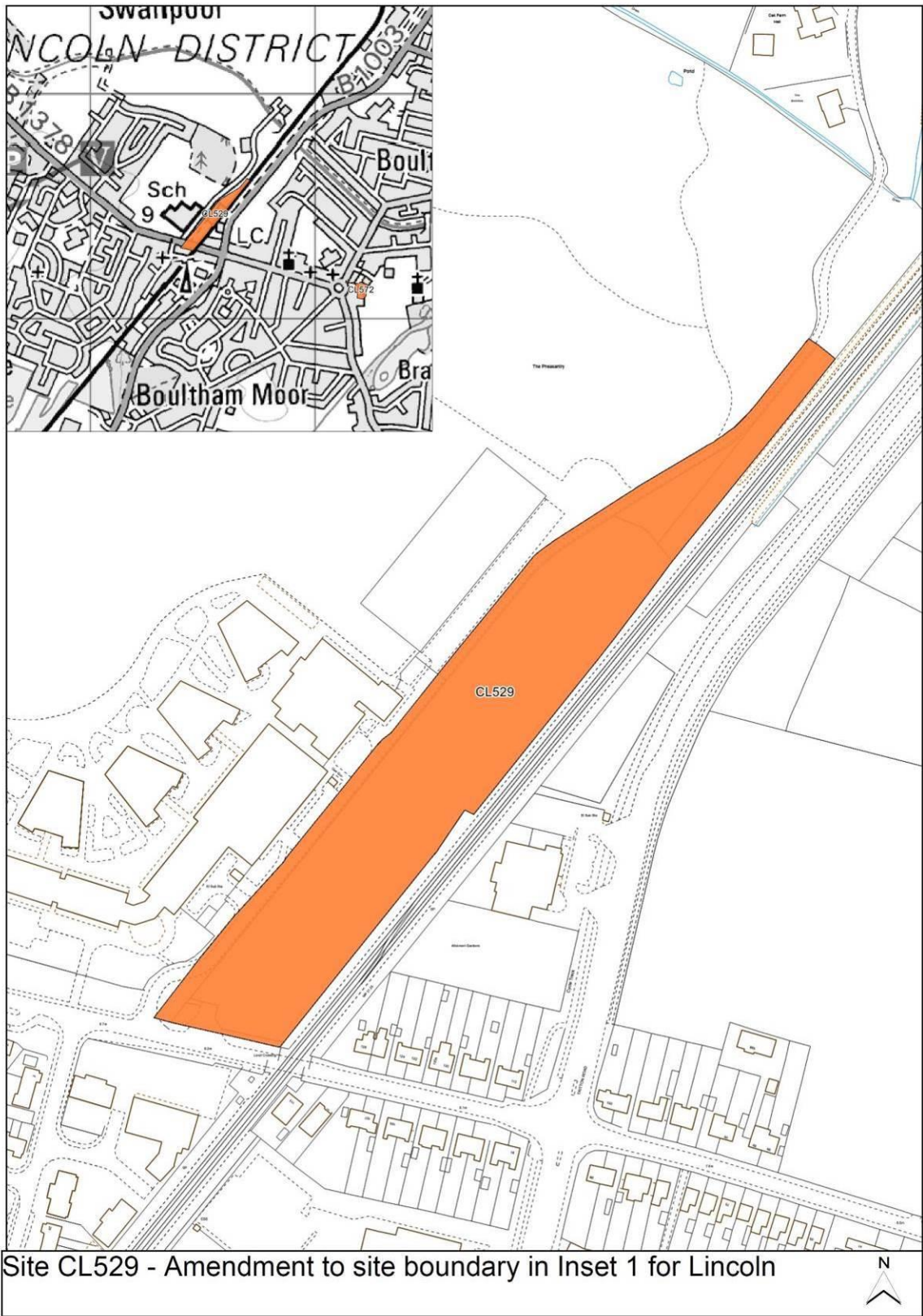
		See Appendix 1	
MapMod/20	Inset Map 14	Do not include site CL4736 (formerly CL1200) on the Policies Map See Appendix 1	Sites with permission are no longer being included as allocations in this policy, as it is contrary to the overall site allocations methodology.
MapMod/21	Inset Map 15	Do not include site CL47 on the Policies Map See Appendix 1	Sites with permission are no longer being included as allocations in this policy, as it is contrary to the overall site allocations methodology.
MapMod/22	Inset Map 19	Amend Inset Map 19 (Keelby), and specifically the Important Open Space (IOS) designation to the rear of Riby Road and Woodlands Avenue, Keelby, so as to remove two small parcels from the IOS designation. See applicable Map at appendix 1 which identifies the IOS as amended by this suggested modification. See Appendix 1	Since submitting the Plan, and based on further investigation following a representation objecting to the designation, it has come to light that two parts of the designation have been developed recently. The suggested modification therefore removes these areas from the IOS designation, but the remainder of the site remains as an IOS designation.
MapMod/23	Inset Map 19	Amend the Local Green Space designation boundary on Inset Map 19 (Keelby) to exclude an area of agricultural land. See Appendix 1	To match the sports ground area intended for the Local Green Space designation.
MapMod/24	Inset Map 24	The boundary of site CL4660 as identified on the Submission Policies Map will not be taken forward. The site is, however, already now included on the Policies Map by virtue of the recently adopted Neighbourhood Plan in Nettleham.	To reflect the adopted Neighbourhood Plan in Nettleham. This boundary was changed prior to the referendum on the neighbourhood plan.
MapMod/25	Inset Map 25	Do not include site CL22 on the Policies Map	Sites with permission are no longer being included as allocations in this policy, as it is contrary to the overall

		See Appendix 1	site allocations methodology.
MapMod/26	Inset Map 29	Add site CL4768 See Appendix 1	Site added as this now has permission for 100 dwellings.
MapMod/27	Inset Map 31	Do not include site CL4664 on the Policies Map See Appendix 1	This site has now completed.
MapMod/28	New Inset Map	Create a new Inset Map for Middle Rasen. See Appendix 1	Inset to be added as Middle Rasen is a large village and was considered for allocations as it has a Green Wedge designation adjoining the village.
MapMod/29	New Inset Maps	Create an Inset Map for all those settlements which currently do not have a proposed Inset Map but do have an allocation (which includes allocations for Local Green Space and Important Open Space allocations, but excludes those settlements which only have designations which are set by means other than the Local Plan, for example Conservation Areas and sites protected for biodiversity purposes). NOTE: such maps are not included in this Schedule, as no change to the Policies Map (or allocations on it) is being made as a result of this 'modification'.	This is not a modification to the Policies Map, but rather a presentational improvement to the Policies Map.

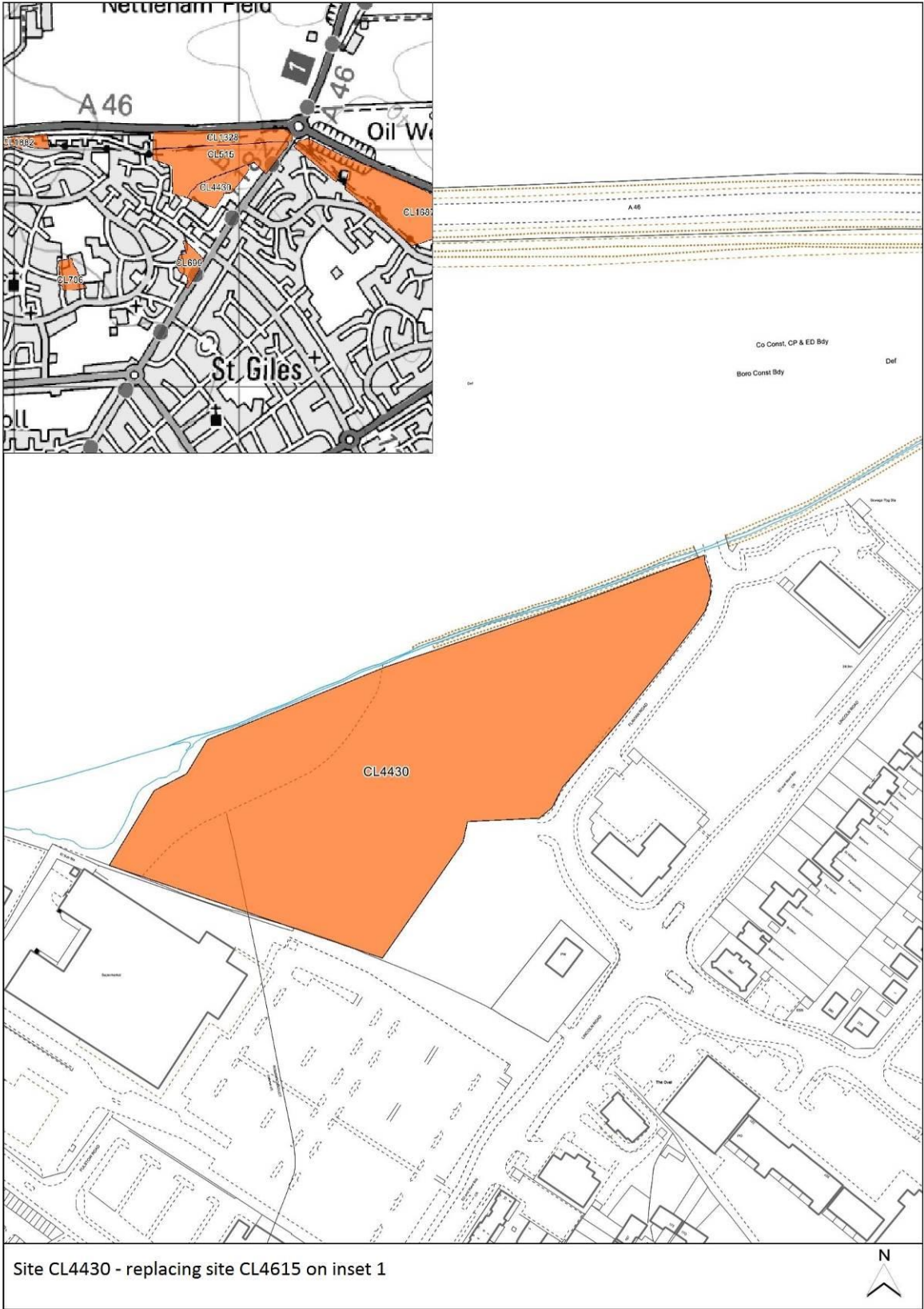
MapMod/1 – removed important open space designation from sites CL4652 and CL4704 on Inset Map 1



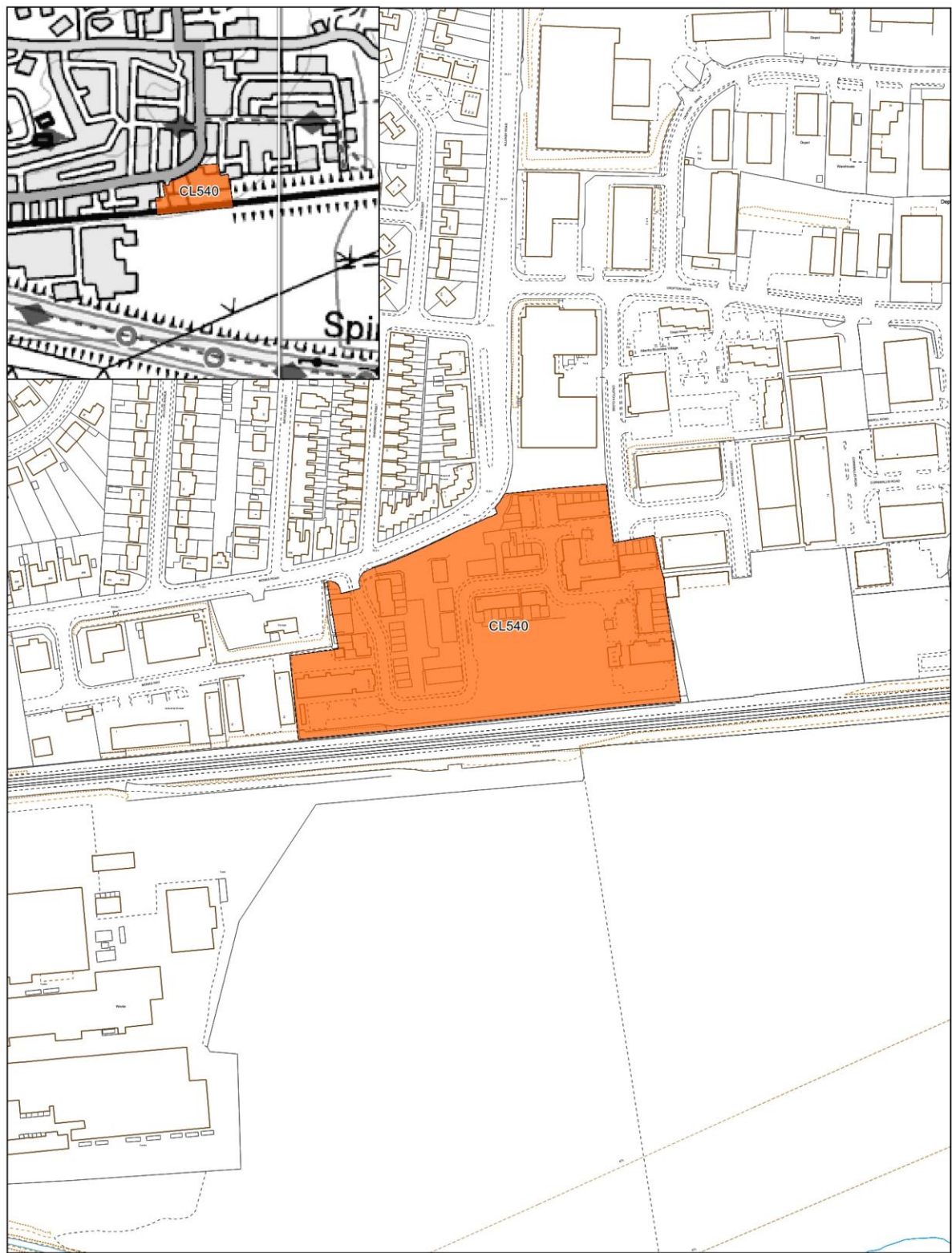
MapMod/2 - Amended boundary of site CL529 on Inset Map 1



MapMod/3 – Site boundary for CL4430 to replace CL4615 on Inset Map 1



MapMod/4 – Add CL540 to Inset Map 1

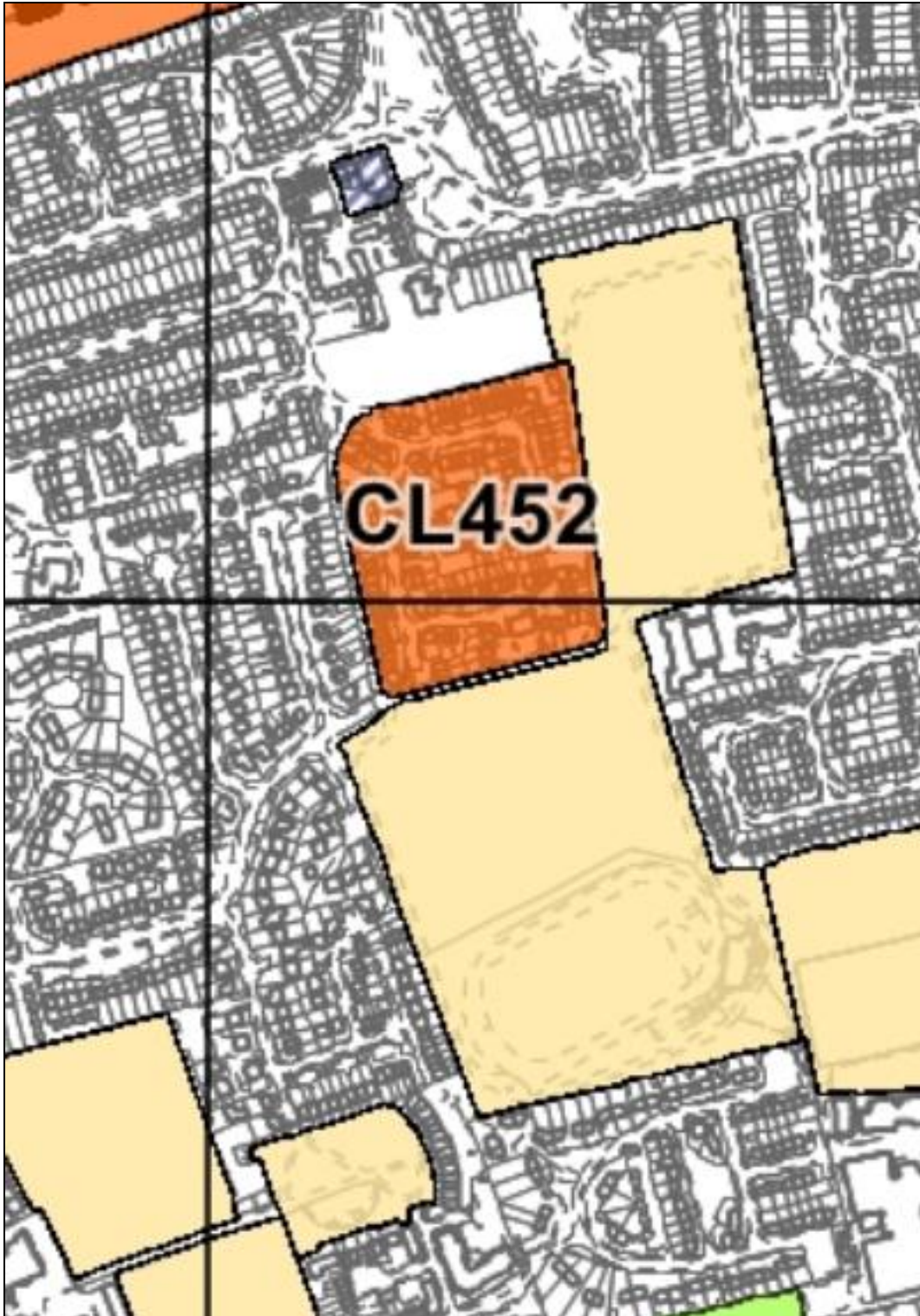


Site CL540 - Addition to Inset 1 for Lincoln



MapMod/5 – Remove CL452 from Inset Map 1

Site CL452 identified below, and as included on the Submission Policies Map (June 2016) Inset Map 1, is proposed not to be included on the adopted Policies Map because the site has now entirely or predominantly completed. For the same reasoning, the site is also proposed to not be listed in the Local Plan (it is currently listed in Policy LP49), as confirmed in Main Modification 69 of the Schedule of Main Modifications being consulted upon alongside this document.



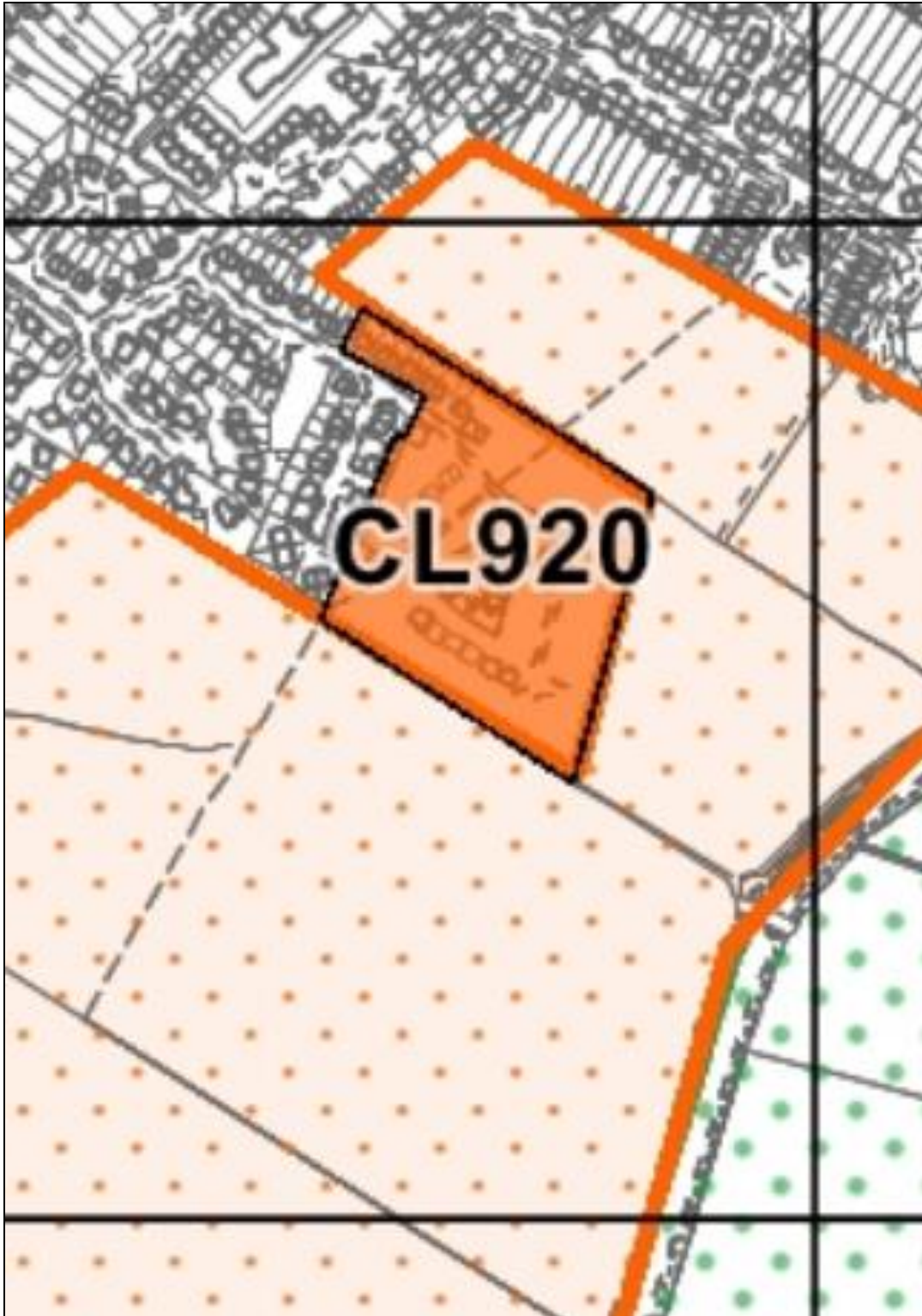
MapMod/6 – Remove CL516 from Inset Map 1

Site CL516 identified below, and as included on the Submission Policies Map (June 2016) Inset Map 1, is proposed not to be included on the adopted Policies Map because the site has now entirely or predominantly completed. For the same reasoning, the site is also proposed to not be listed in the Local Plan (it is currently listed in Policy LP49), as confirmed in Main Modification 69 of the Schedule of Main Modifications being consulted upon alongside this document.



MapMod/7 – Remove CL920 from Inset Map 1

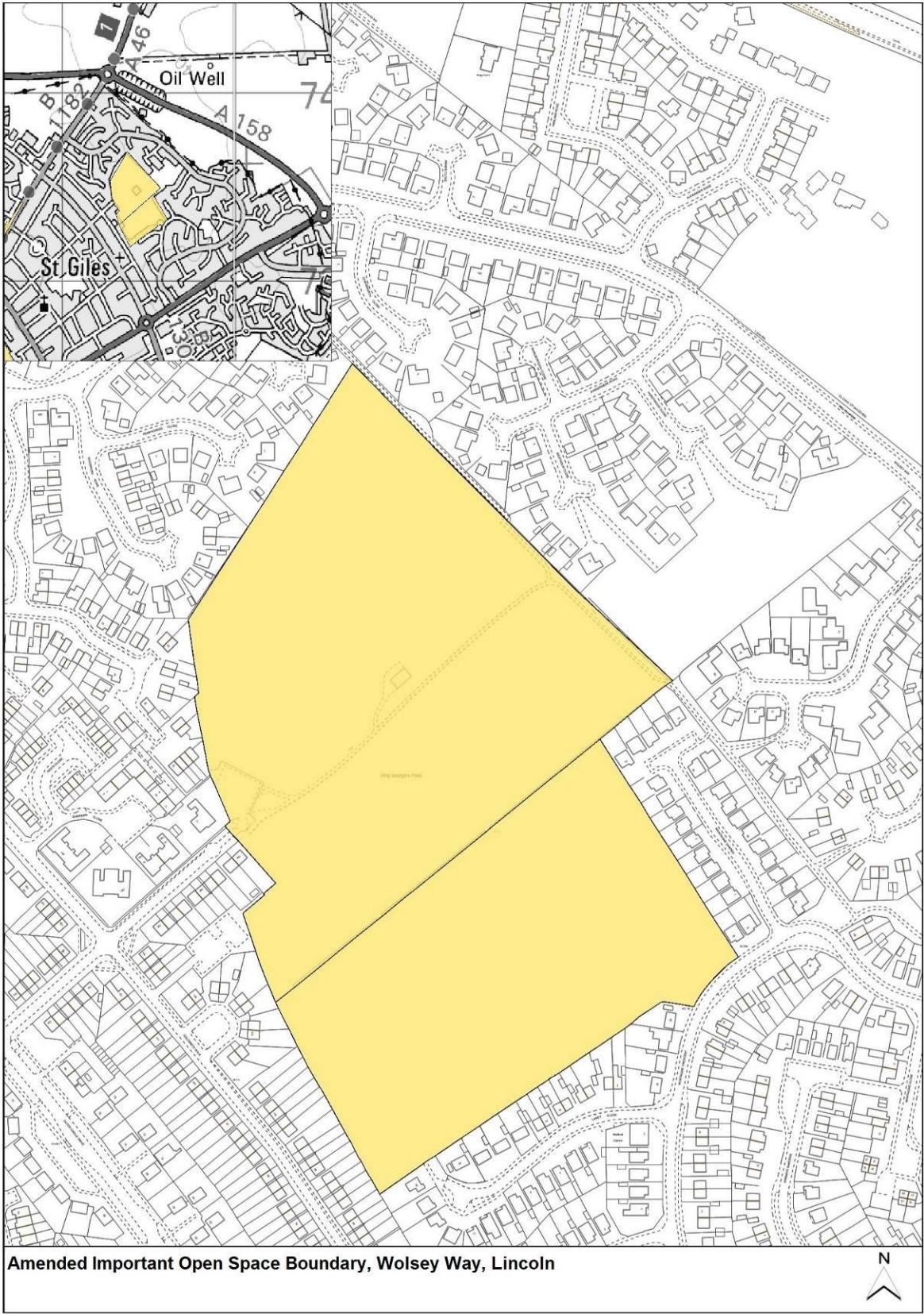
Site CL920 identified below, and as included on the Submission Policies Map (June 2016) Inset Map 1, is proposed not to be included on the adopted Policies Map because the site has now entirely or predominantly completed. For the same reasoning, the site is also proposed to not be listed in the Local Plan (it is currently listed in Policy LP49), as confirmed in Main Modification 69 of the Schedule of Main Modifications being consulted upon alongside this document.



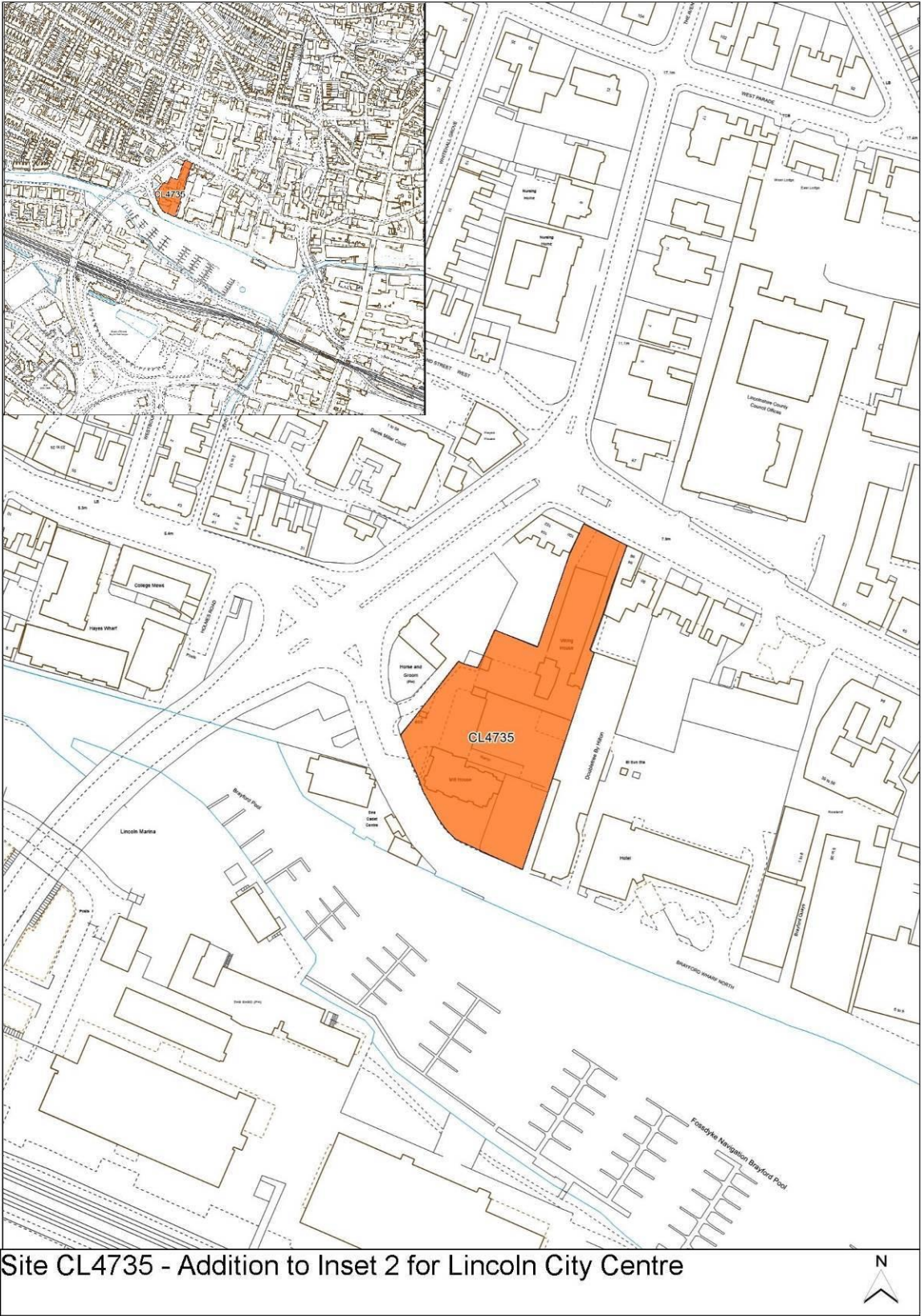
MapMod/8 – Amend boundary for Green Wedge at Hykeham Pits on Inset Map 1



MapMod/9 – Amend boundary for Important Open Space at Wolsey Way, Lincoln

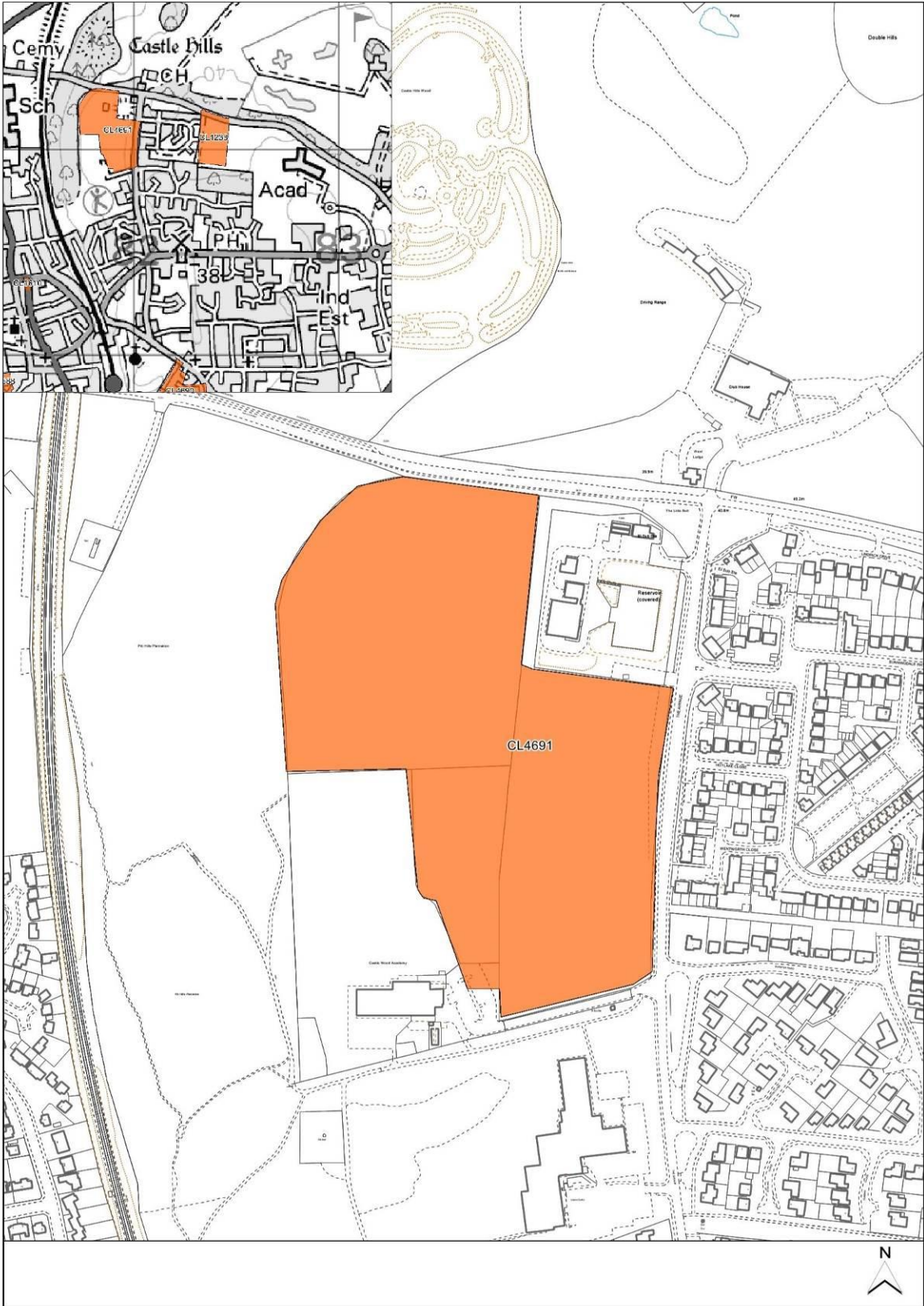


MapMod/10 – Add CL4735 to Inset Map 2



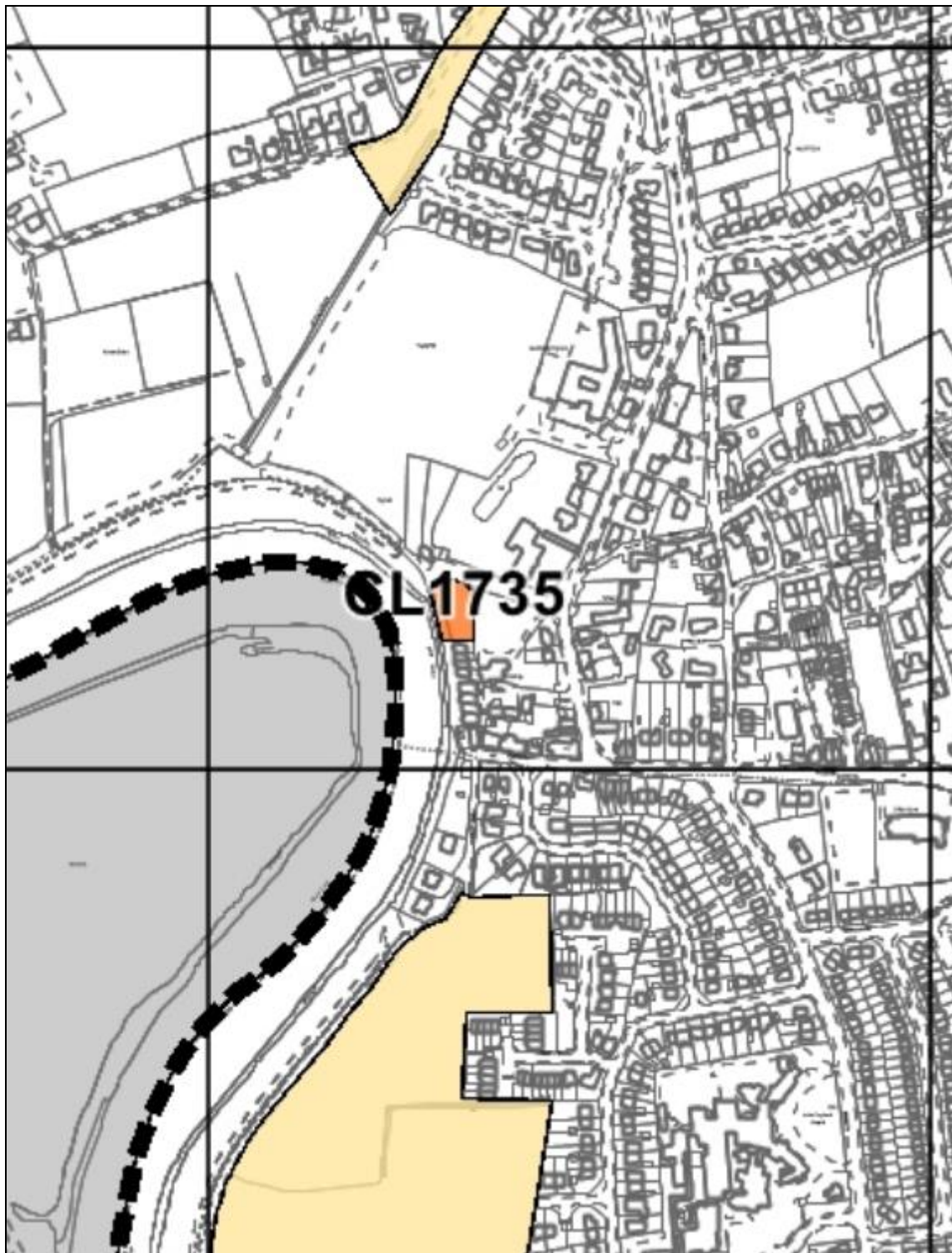
Site CL4735 - Addition to Inset 2 for Lincoln City Centre

MapMod/11 – Extended site boundary for CL4691 on Inset Map 3



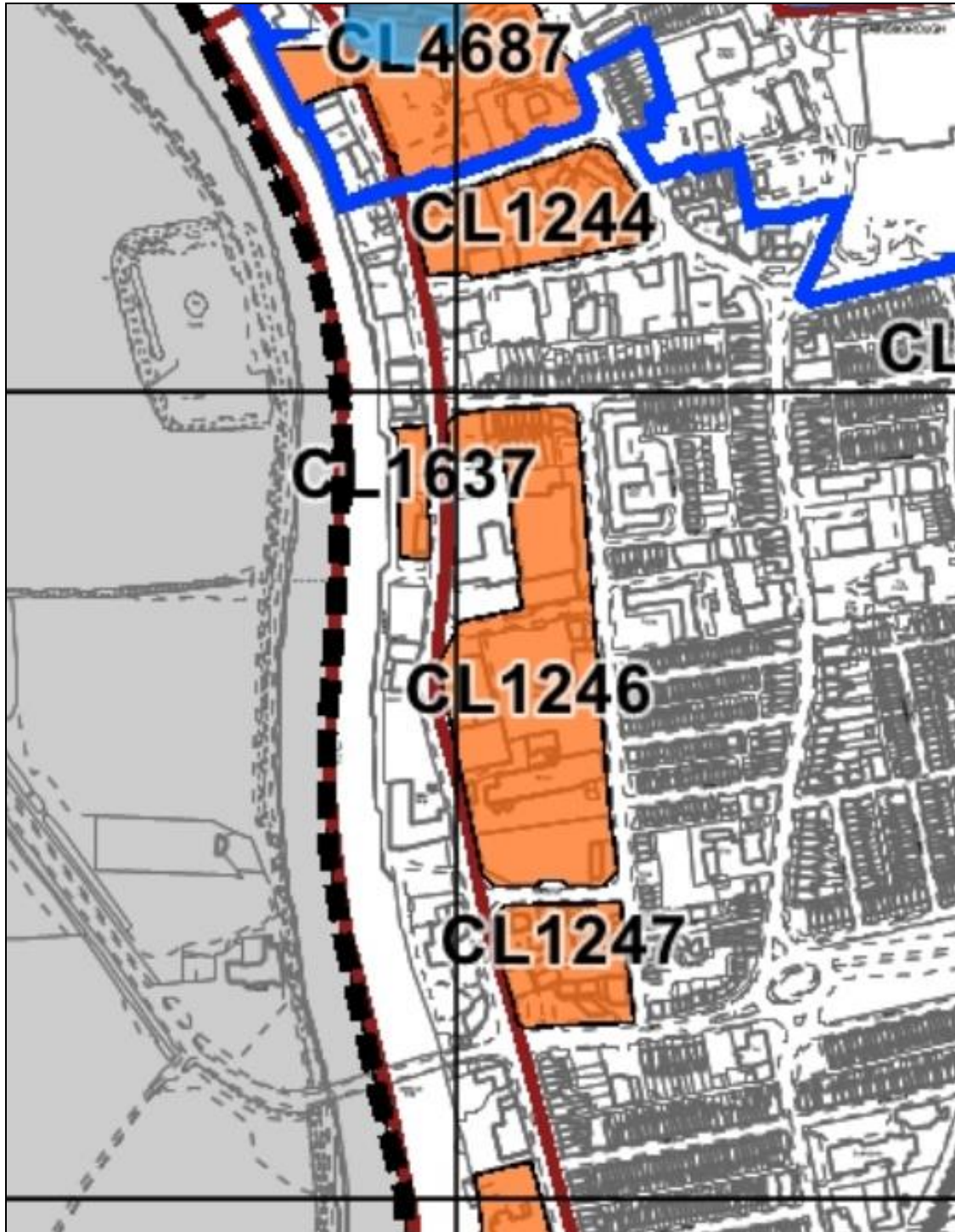
MapMod/12 – Remove CL1735 from Inset Map 3

Site CL1735 identified below, and as included on the Submission Policies Map (June 2016) Inset Map 3, is proposed not to be included on the adopted Policies Map because the site is not proposed as an allocation as it is unlikely to deliver 25 or more dwellings in accordance with the site allocations methodology. It was not included as an allocation in the Submitted Local Plan.



MapMod/13 – Remove CL1637 from Inset Map 3

Site CL1637 identified below, and as included on the Submission Policies Map (June 2016) Inset Map 3, is proposed not to be included on the adopted Policies Map because the site is not proposed as an allocation as it is unlikely to deliver 25 or more dwellings in accordance with the site allocations methodology. It was not included as an allocation in the Submitted Local Plan.

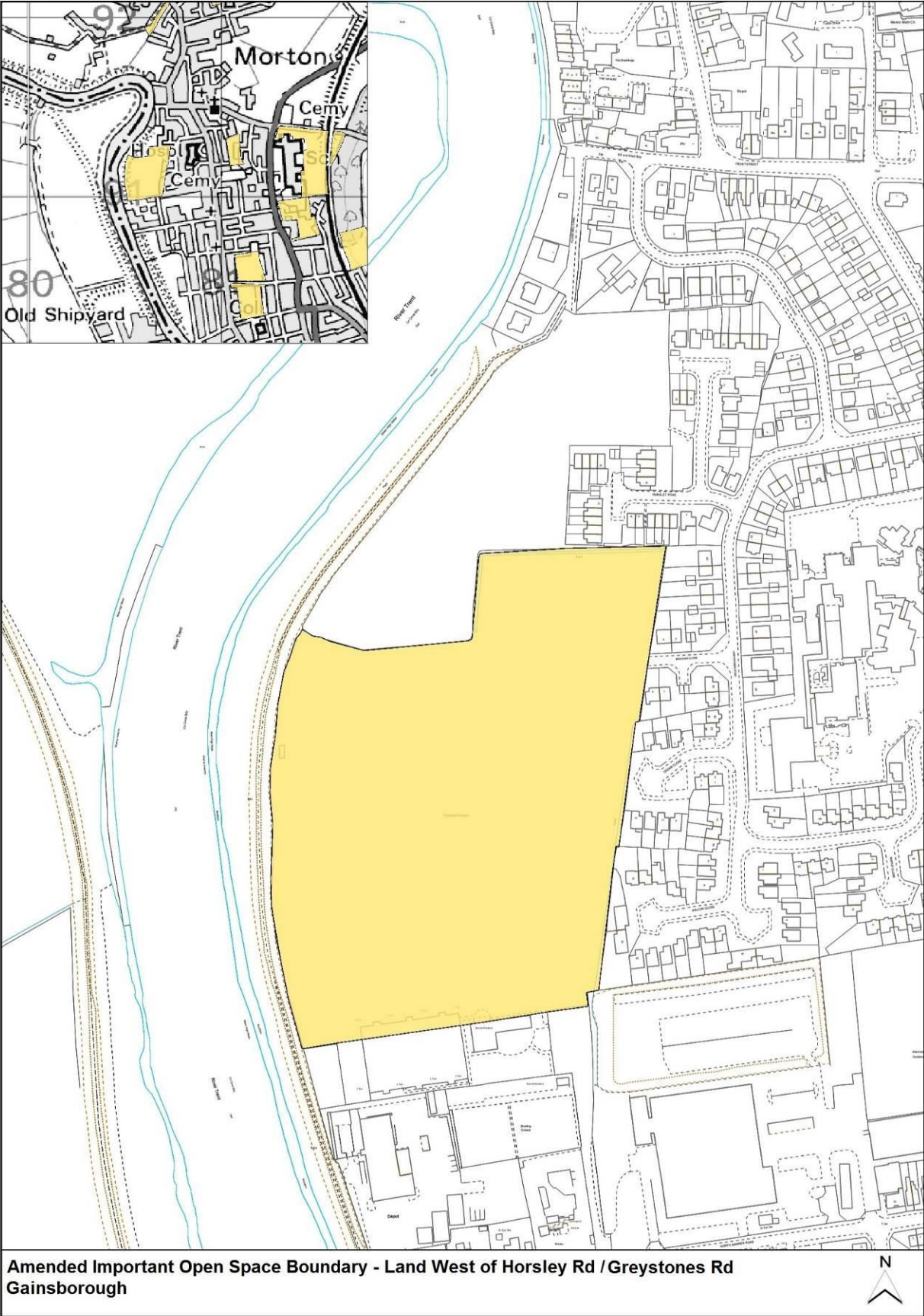


MapMod/14 – Remove CL1624 from Inset Map 3

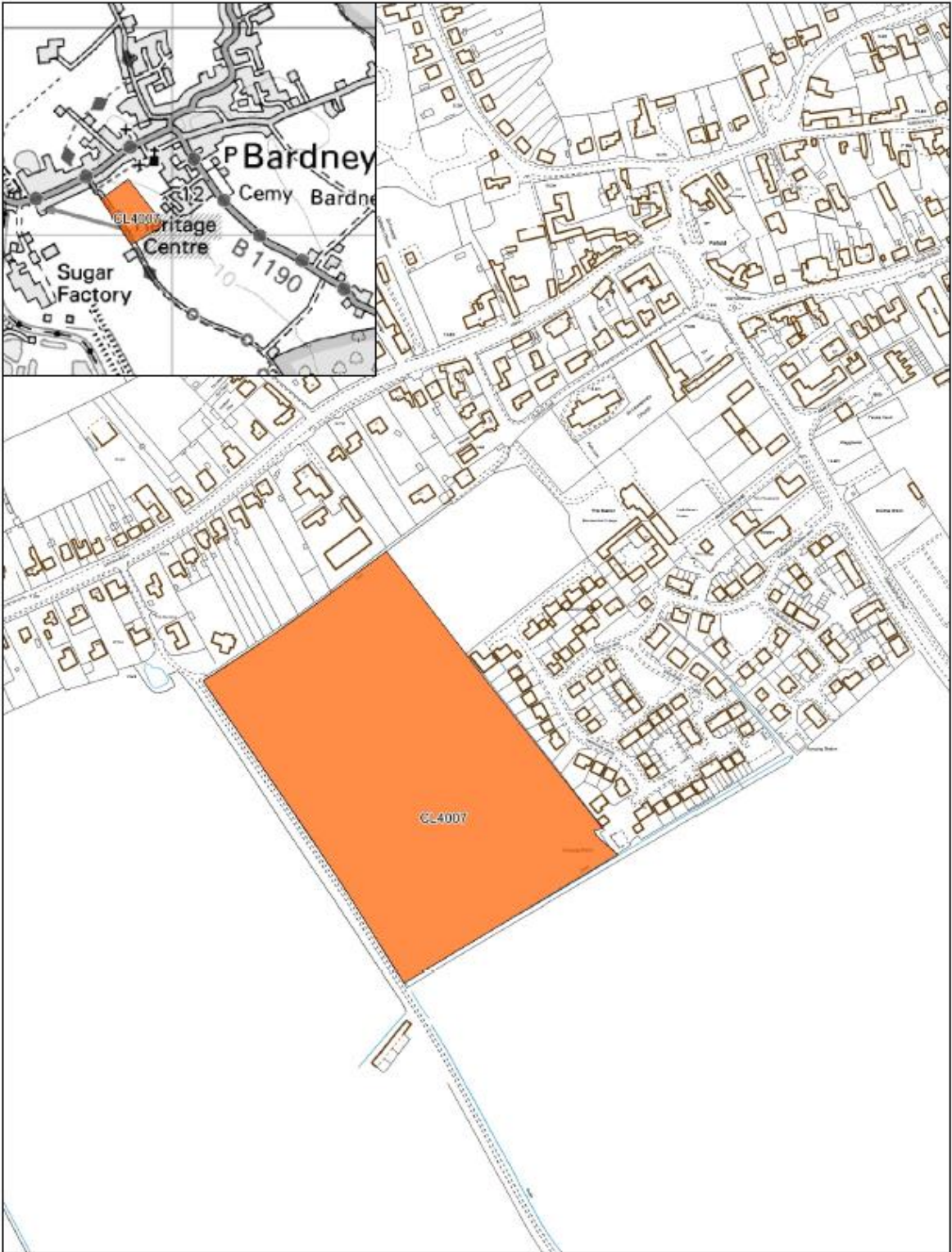
Site CL1624 identified below, and as included on the Submission Policies Map (June 2016) Inset Map 3, is proposed not to be included on the adopted Policies Map because the site has now entirely or predominantly completed. For the same reasoning, the site is also proposed to not be listed in the Local Plan (it is currently listed in Policy LP50), as confirmed in Main Modification 69 of the Schedule of Main Modifications being consulted upon alongside this document.



MapMod/15 – Amend boundary of Important Open Space to the west of Horsley Road and Gainsborough Road, Gainsborough



MapMod/17 – Add CL4007 to Inset Map 5



Site CL4007 - Inset 5 for Bardney

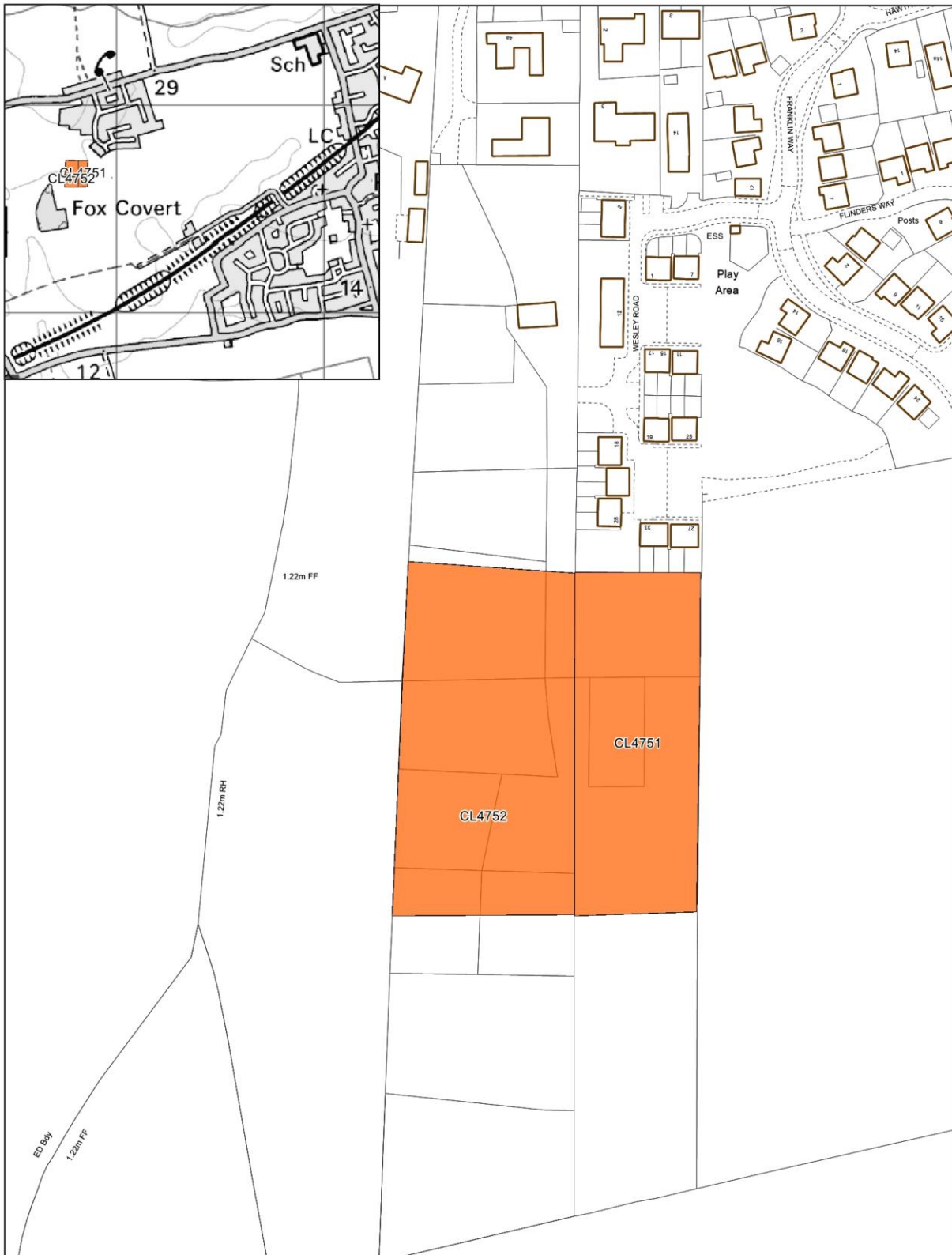


MapMod/18 – Remove site CL2089 from Inset Map 6

Site CL2089 identified below, and as included on the Submission Policies Map (June 2016) Inset Map 6, is proposed not to be included on the adopted Policies Map because sites in small and medium villages are no longer being allocated where they have an extant permission in accordance with the site allocations methodology (with the exception of Hemswell Cliff).. For the same reasoning, the site is also proposed to not be listed in the Local Plan (it is currently listed in Policy LP53), as confirmed in Main Modification 69 of the Schedule of Main Modifications being consulted upon alongside this document.



MapMod/19 – Add sites CL4751 Site 1 and CL4752 Site 2 to an amended Inset Map 12

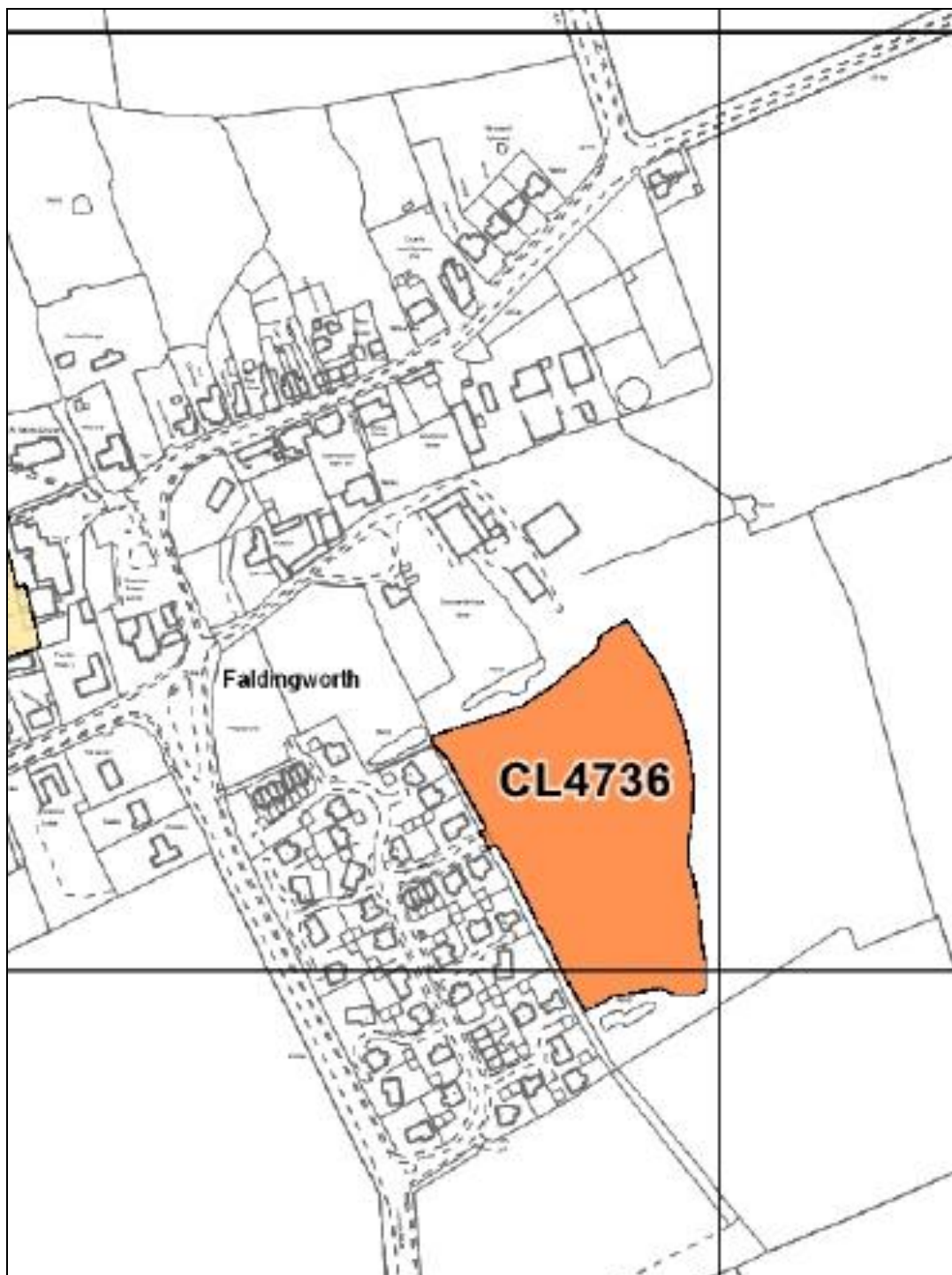


Sites CL4751 and CL4752 - Inset 12 for Cherry Willingham
to be expanded to include this area to the west



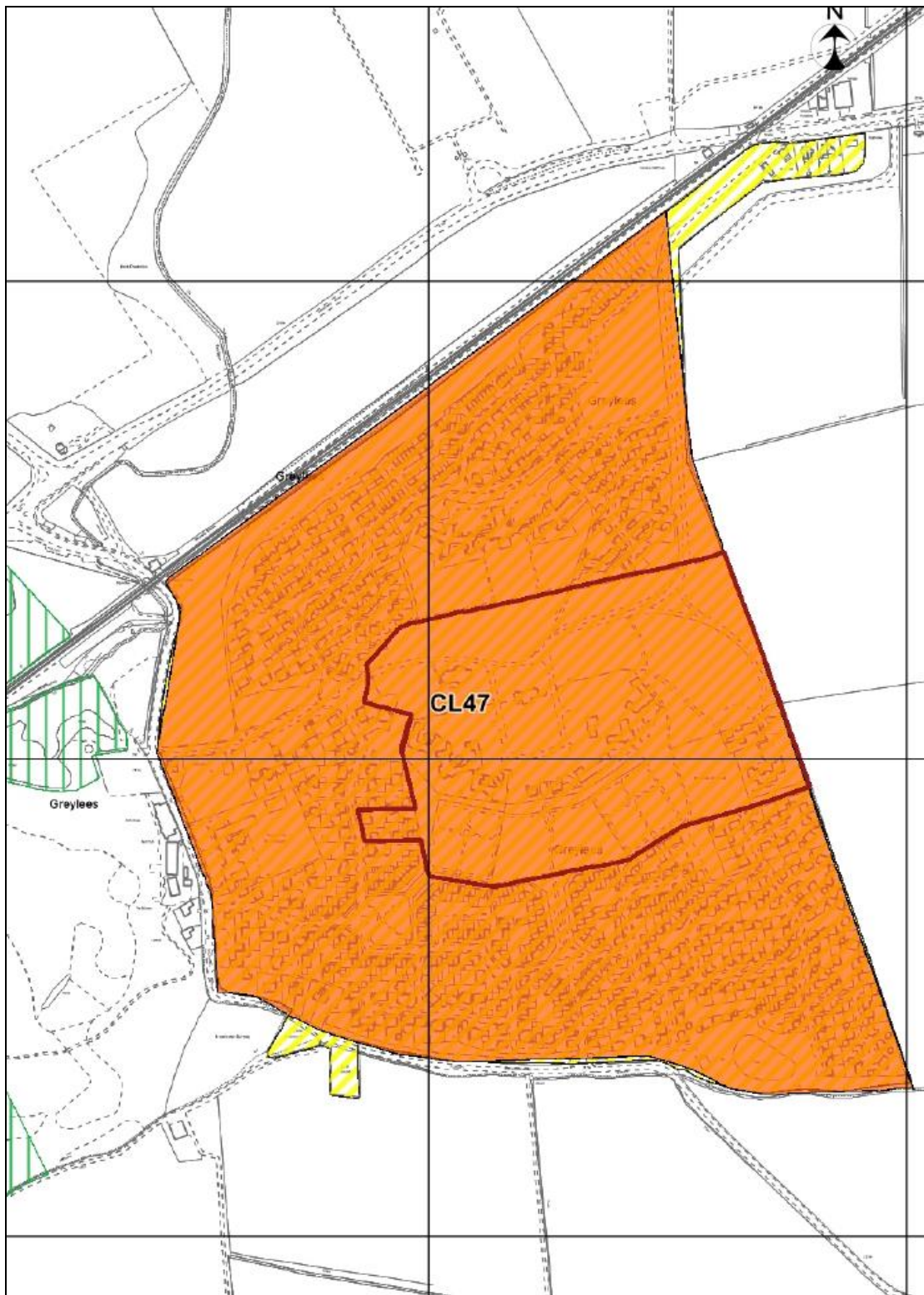
MapMod/20 – Remove CL4736 (formerly CL1200) from Inset Map 14

Site CL4736 identified below (previously referred to as CL1200 in the Local Plan), and as included on the Submission Policies Map (June 2016) Inset Map 14, is proposed not to be included on the adopted Policies Map because sites in small and medium villages are no longer being allocated where they have an extant permission in accordance with the site allocations methodology (with the exception of Hemswell Cliff).. For the same reasoning, the site is also proposed to not be listed in the Local Plan (it is currently listed in Policy LP53), as confirmed in Main Modification 69 of the Schedule of Main Modifications being consulted upon alongside this document.

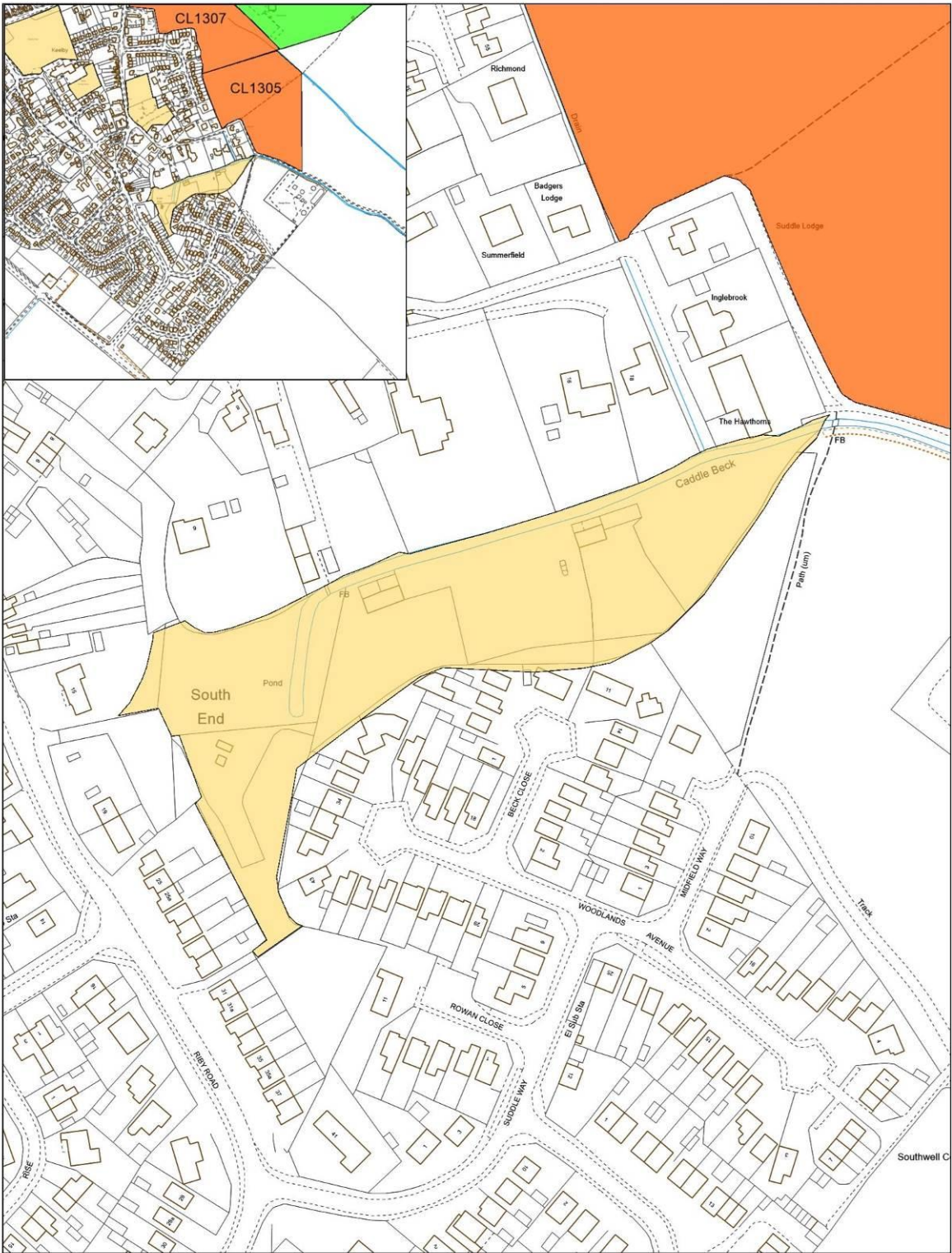


MapMod/21 – Remove C47 from Inset Map 15

Site CL47 identified below, and as included on the Submission Policies Map (June 2016) Inset Map 15, is proposed not to be included on the adopted Policies Map because sites in small and medium villages are no longer being allocated where they have an extant permission in accordance with the site allocations methodology (with the exception of Hemswell Cliff).. For the same reasoning, the site is also proposed to not be listed in the Local Plan (it is currently listed in Policy LP53), as confirmed in Main Modification 69 of the Schedule of Main Modifications being consulted upon alongside this document.

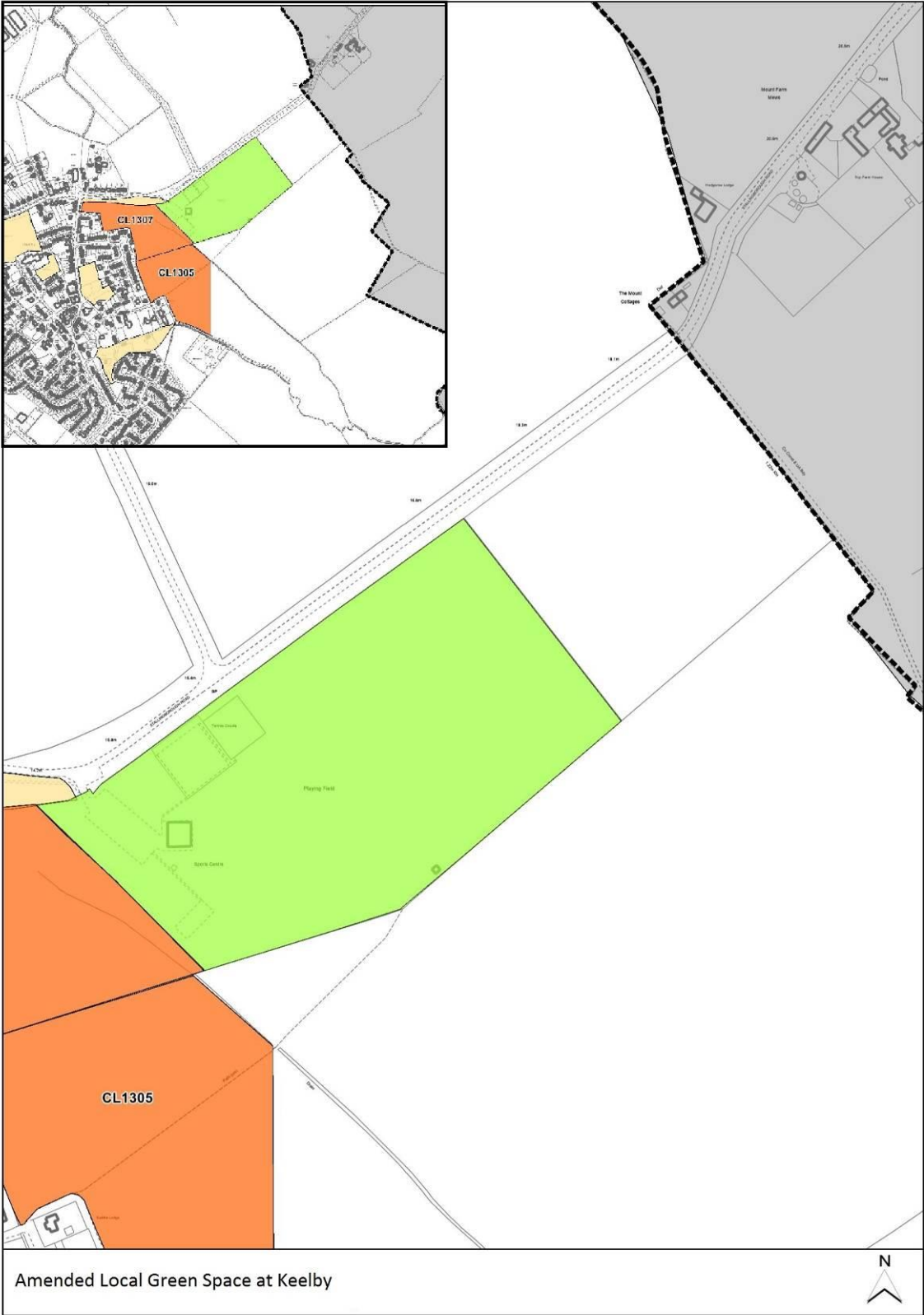


MapMod/22 – Amended Important Open Space on Inset Map 19



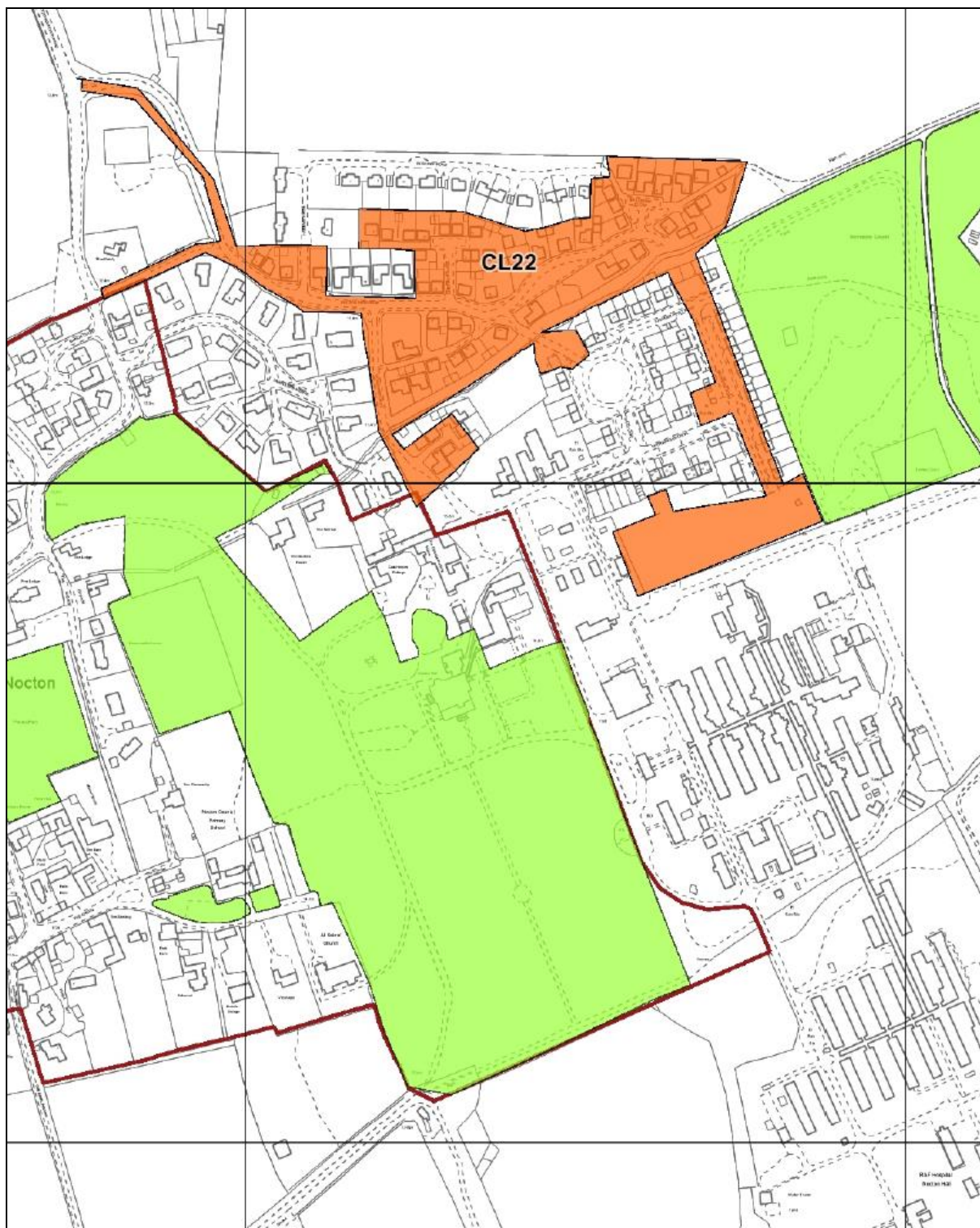
Proposed Modification to Important Open Space
in Inset 19 for Keelby

MapMod/23 – Amended Local Green Space on Inset Map 19

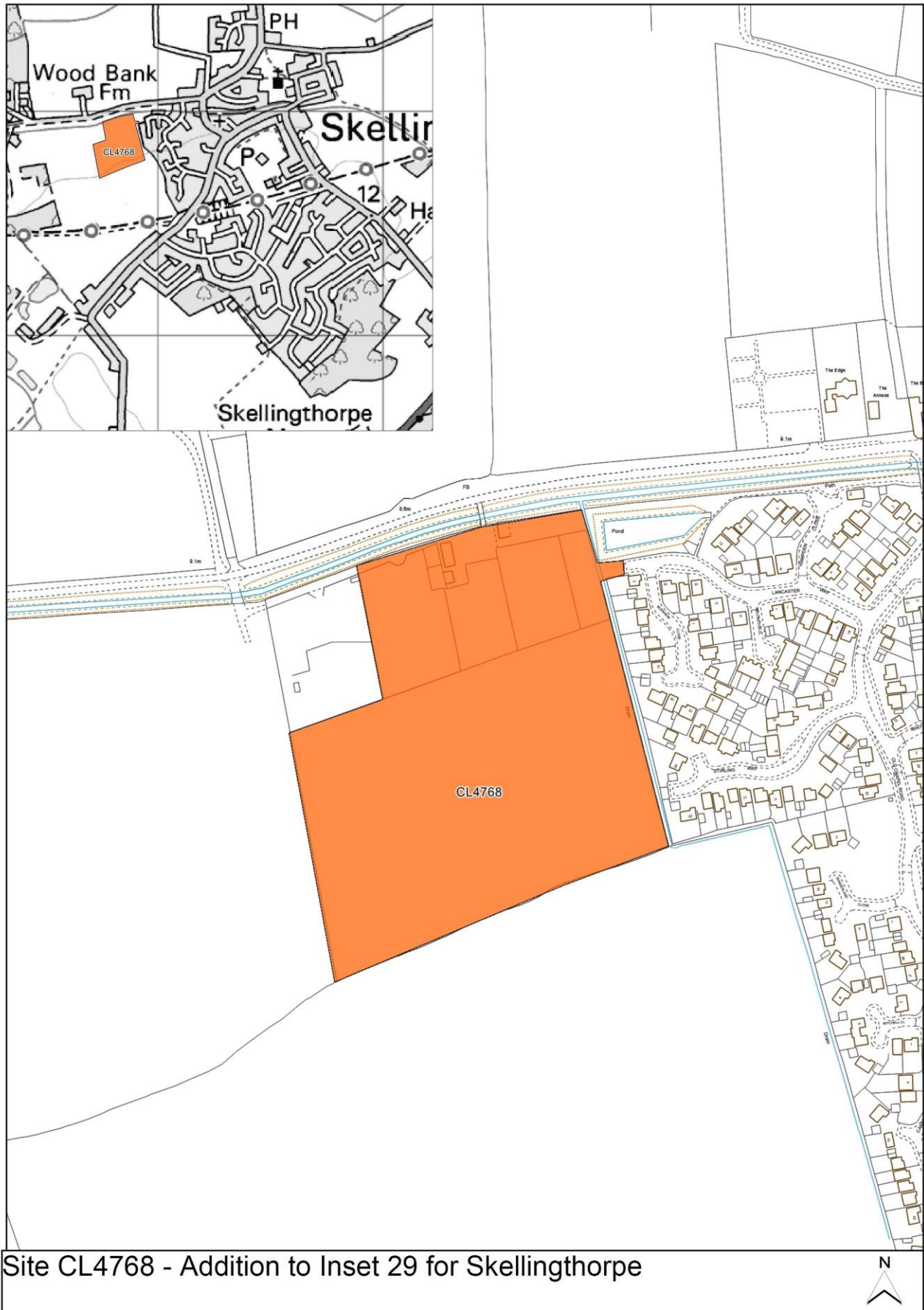


MapMod/25 – Remove C22 from Inset Map 25

Site CL22 identified below, and as included on the Submission Policies Map (June 2016) Inset Map 25, is proposed not to be included on the adopted Policies Map because sites in small and medium villages are no longer being allocated where they have an extant permission in accordance with the site allocations methodology (with the exception of Hemswell Cliff). For the same reasoning, the site is also proposed to not be listed in the Local Plan (it is currently listed in Policy LP53), as confirmed in Main Modification 69 of the Schedule of Main Modifications being consulted upon alongside this document.



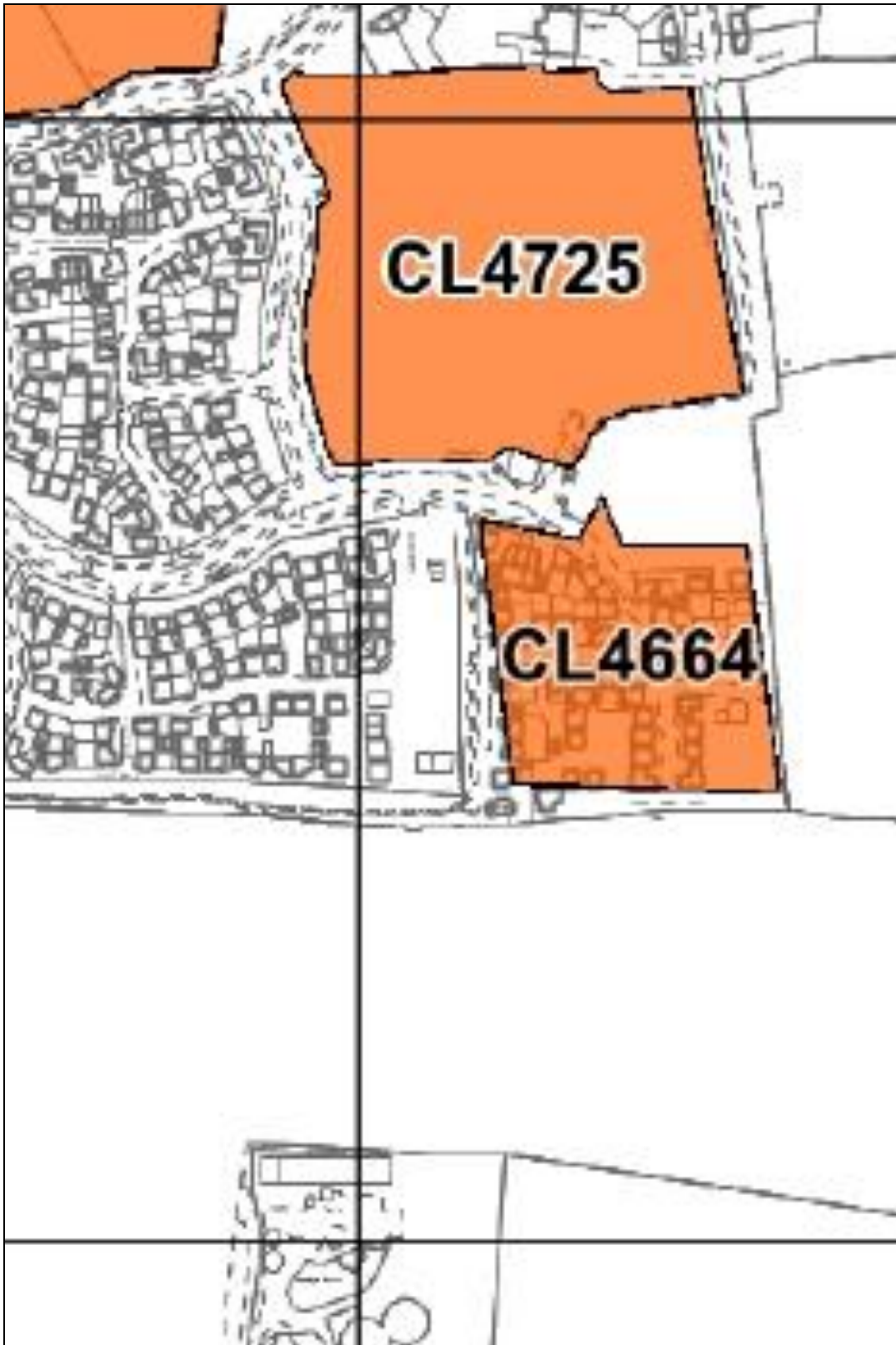
MapMod/26 – Add sites CL4768 to Inset Map 29



Site CL4768 - Addition to Inset 29 for Skellingthorpe

MapMod/27 – Remove C4664 from Inset Map 31

Site CL4664 identified below, and as included on the Submission Policies Map (June 2016) Inset Map 31, is proposed not to be included on the adopted Policies Map because the site has now entirely or predominantly completed. For the same reasoning, the site is also proposed to not be listed in the Local Plan (it is currently listed in Policy LP52), as confirmed in Main Modification 69 of the Schedule of Main Modifications being consulted upon alongside this document.



MapMod/28 – New Middle Rasen Inset Map



Reproduced from the Ordnance Survey mapping with the permission of the Controller of Her Majesty's Stationery Office ©Crown copyright.
Unauthorised reproduction infringes ©Crown copyright and may lead to prosecution or civil proceedings.
City of Lincoln Council Licence No. LA 100018414 North Kesteven District Council Licence No. LA 100017926
West Lindsey District Council Licence No. LA 100018701 Date 18 January 2017



INSET XX MIDDLE RASEN